

# Louisiana Workforce

## at a glance

Release Date: Sept. 26, 2014

Data For: August 2014

<http://www.laworks.net>

### In This Issue

- 2 **Economic Comparison**
- 3 **NSA State & Area Employment**
- 4—7 **Data Trends (Graphs)**
- 8—14 **Nonfarm Employment**
- 15—16 **Unemployment Rates & Civilian Labor Force**
- 17 **Average Hours & Earnings**
- 18 **UI Claimants & Answers to LMI Questions**
- 19—20 **Glossary, Data Constraints, Downloads & Web Links**

Seasonally adjusted nonfarm employment for Louisiana was estimated at 1,983,200 in August 2014. This represents a gain of 2,100 jobs from the previous month, and an increase of 30,100 jobs from August 2013. The education and health services sector showed the largest over-the-month increase by adding 2,300 jobs from July. The construction sector showed the largest change from last August by adding 9,500 jobs.

Over the month, six of the 11 industry sectors had increases in employment, and five showed declines. After education and health services, the largest over-the-month increase was 1,200 jobs, seen in the professional and business services sector followed by an increase of 1,100 jobs in the construction sector. Manufacturing posted an improvement of 600 jobs from July. The information sector added 500 jobs, while mining and logging added 300. The largest over-the-month decline was seen in leisure and hospitality, which lost 1,000 jobs. The second largest over-the-month decline was seen in other services, which lost 900 jobs. Trade, transportation, and utilities followed with a loss of 800, and the government sector lost 700 jobs. Financial activities saw a decline of 500 jobs from July.

Over the year, six sectors posted gains and five showed declines. After the gain in the construction sector of 9,500 jobs, the largest over-the-year gain was seen in professional and business services with a gain of 8,000 jobs. The leisure and hospitality sector showed an increase of 7,400 jobs from last August, while the education and health services sector increased by 7,000. The trade, transportation, and utility sector improved by adding 5,700 jobs, while manufacturing added 2,900 jobs. The largest over-the-year decline was seen in the government sector, which dropped by 6,300 from August 2013. Information was down 2,200 jobs, while other services lost 1,200 jobs. Mining and logging lost 400 jobs. Financial activities reported 300 fewer jobs than last year.

The August 2014 preliminary seasonally adjusted unemployment rate for Louisiana was 5.8 percent, an increase from the July 2014 revised rate of 5.4 percent. The national unemployment rate for August was 6.1 percent, a decrease from the July rate of 6.2 percent. Total unemployment in the state for August was 123,316. The state civilian labor force increased to 2,129,143, with an increase in total employment to 2,005,827.

Seasonally Adjusted	AUG 2014	
	United States	Louisiana
<b>Civilian Labor Force</b>		
Labor Force	155,959,000	2,129,143
Employed	146,368,000	2,005,827
Unemployed	9,591,000	123,316
Unemployment Rate	6.1	5.8
<b>Nonfarm Wage and Salary Employment</b>	<b>AUG 2014</b>	<b>AUG 2014</b>
	<b>United States</b>	<b>Louisiana</b>
Total Nonfarm	139,118,000	1,983,200
Mining and Logging	918,000	54,100
Construction	6,068,000	140,600
Manufacturing	12,158,000	146,900
Trade, Transportation, and Utilities	26,440,000	389,800
Information	2,667,000	23,400
Financial Activities	7,963,000	95,200
Professional and Business Services	19,302,000	215,300
Education and Health Services	21,539,000	297,400
Leisure and Hospitality	14,651,000	222,100
Other Services	5,515,000	64,500
Government	21,897,000	333,900

#### All Employees Average Hours & Earnings

(Not Seasonally Adjusted)

Construction	AUG 2014	AUG 2014
	United States	Louisiana
Average Weekly Earnings	\$ 1,059.87	\$ 1,067.16
Average Weekly Hours	39.8	43.1
Average Hourly Wages	\$ 26.63	\$ 24.76
<b>Manufacturing</b>		
Average Weekly Earnings	\$ 1,014.75	\$ 1,128.99
Average Weekly Hours	41.0	42.7
Average Hourly Wages	\$ 24.75	\$ 26.44

#### Louisiana Unemployment Insurance Activities

Claims	AUG 2014
Initial New & Renewals	8,488
Continued Weekly Intrastate Only	79,298
<b>Insured Unemployment Rate</b>	1.2
<b>Benefits</b>	
Number of First Payment	4,371
Benefits Paid (000's)	\$ 14,188
Weeks Compensated	70,039
Average Wkly. Benefit Amount	\$ 204.63
Average Duration of Claim (weeks)	16.0
<b>Exhaustions</b>	1,249

#### United States Consumer Price Index

	AUG 2014
All Urban Consumers	237.9



The civilian labor force and nonfarm **estimates** are prepared according to Bureau of Labor Statistics (BLS) methodology and are comparable with the U.S. and other states' data. For more information, go to page 19.

## Economic Comparison

Seasonally Adjusted Civilian Labor Force	AUG 2014		JULY 2014		AUG 2013	
	United States	Louisiana	United States	Louisiana	United States	Louisiana
Labor Force	155,959,000	2,129,143	156,023,000	2,114,031	155,435,000	2,099,440
Employed	146,368,000	2,005,827	146,352,000	2,000,195	144,179,000	1,968,817
Unemployed	9,591,000	123,316	9,671,000	113,836	11,256,000	130,623
Unemployment Rate	6.1	5.8	6.2	5.4	7.2	6.2
Nonfarm Wage and Salary Employment	AUG 2014	AUG 2014	JULY 2014	JULY 2014	AUG 2013	AUG 2013
	United States	Louisiana	United States	Louisiana	United States	Louisiana
Total Nonfarm	139,118,000	1,983,200	138,976,000	1,981,100	136,636,000	1,953,100
Mining and Logging	918,000	54,100	916,000	53,800	870,000	54,500
Construction	6,068,000	140,600	6,048,000	139,500	5,836,000	131,100
Manufacturing	12,158,000	146,900	12,158,000	146,300	11,990,000	144,000
Trade, Transportation, and Utilities	26,440,000	389,800	26,439,000	390,600	25,911,000	384,100
Information	2,667,000	23,400	2,670,000	22,900	2,669,000	25,600
Financial Activities	7,963,000	95,200	7,956,000	95,700	7,897,000	95,500
Professional and Business Services	19,302,000	215,300	19,255,000	214,100	18,663,000	207,300
Education and Health Services	21,539,000	297,400	21,502,000	295,100	21,172,000	290,400
Leisure and Hospitality	14,651,000	222,100	14,636,000	223,100	14,306,000	214,700
Other Services	5,515,000	64,500	5,507,000	65,400	5,469,000	65,700
Government	21,897,000	333,900	21,889,000	334,600	21,853,000	340,200

## All Employees Average Hours &amp; Earnings

Construction	United States ( Not Seasonally Adjusted)			Louisiana ( Not Seasonally Adjusted)		
	AUG 2014	JULY 2014	AUG 2013	AUG 2014	JULY 2014	AUG 2013
Average Weekly Earnings	\$ 1,059.87	\$ 1,056.42	\$ 1,036.17	\$ 1,067.16	\$ 1,043.89	\$ 994.59
Average Weekly Hours	39.8	39.7	39.7	43.1	42.8	43.0
Average Hourly Wages	\$ 26.63	\$ 26.61	\$ 26.10	\$ 24.76	\$ 24.39	\$ 23.13
Manufacturing						
Average Weekly Earnings	\$ 1,014.75	\$ 1,006.43	\$ 991.83	\$ 1,128.99	\$ 1,128.99	\$ 1,147.74
Average Weekly Hours	41.0	40.5	40.9	42.7	42.3	44.4
Average Hourly Wages	\$ 24.75	\$ 24.85	\$ 24.25	\$ 26.44	\$ 26.69	\$ 25.85

## Louisiana Unemployment Insurance Activities

Claims	AUG 2014	JULY 2014	AUG 2013	% Change From	
				JULY 2014	AUG 2013
Initial New & Renewals	8,488	10,050	9,981	-15.5	-15.0
Continued Weekly Intrastate Only	79,298	84,958	91,358	-6.7	-13.2
Insured Unemployment Rate*	1.2	1.1	1.4	6.4	-14.6
Benefits					
Number of First Payment	4,371	5,468	5,468	-20.1	-20.1
Benefits Paid (000's)	\$ 14,188	\$ 15,015	\$ 15,449	-5.5	-8.2
Weeks Compensated	70,039	74,160	75,973	-5.6	-7.8
Average Wkly. Benefit Amount	\$ 204.63	\$ 204.40	\$ 205.40	0.1	-0.4
Average Duration of Claim (w eeks)	16.0	13.6	13.9	18.1	15.3
Exhaustions	1,249	1,509	1,527	-17.2	-18.2

\* Insured unemployment rate is for the week including the 12th of the month.

## United States Consumer Price Index (Not Seasonally Adjusted)

	AUG 2014	% Change From:		JULY 2014	% Change From:	
	Index	Prior Month	Prior Year	Index	Prior Month	Prior Year
All Urban Consumers	237.9	-0.2	1.7	238.3	0.0	2.0

## Not Seasonally Adjusted State and Area Employment

Not seasonally adjusted nonfarm employment for Louisiana was estimated at 1,971,900 for August 2014. Over the month total nonfarm employment gained 4,600 jobs while over the year total nonfarm employment gained 26,000 jobs. Goods-producing employment gained 1,300 jobs over the month and gained 10,100 jobs over the year. Service-providing employment increased by 3,300 jobs from last month, while adding 15,900 jobs over the year.

Total nonfarm employment for August 2014 in the Alexandria MSA was estimated at 62,200. This reflects a zero net change in jobs over the previous month, with a loss of 300 jobs over the year. The goods-producing sector lost 100 jobs over the month while showing no net change over the year. Service-providing employment gained 100 jobs from July with a loss of 300 over the year.

Total nonfarm employment for the Baton Rouge MSA was estimated at 396,600 for August 2014. The MSA showed a gain of 3,600 jobs over the month while gaining 12,900 jobs over the year. Goods-producing employment added 400 jobs over the month and 8,500 jobs over the year. The service-providing sector gained 3,200 jobs from July and added 4,400 jobs over the year.

The Houma MSA nonfarm employment was estimated at 101,600 for August 2014. This shows a loss of 200 jobs over the month and a gain of 1,500 jobs from August 2013. Goods-producing employment showed a gain of 200 jobs over the month while adding 600 jobs over the year. Service-providing employment lost 400 jobs from last month but added 900 jobs over the year.

Total nonfarm employment for the Lafayette MSA was estimated at 162,300 for August 2014. This shows no net change of jobs from last month and a gain of 3,200 jobs from last year. Over the month, goods-producing employment added 100 jobs, while gaining 1,400 jobs over the year. The service-providing sector showed a decrease of 100 jobs from July while adding 1,800 jobs from last year.

Total nonfarm employment for the Lake Charles MSA was estimated at 95,200 for August 2014. This represents a loss of 300 jobs from July, while adding 3,600 jobs from last year. The goods-producing sector lost 100 jobs over the month, while adding 3,000 jobs over the year. The service-providing sector lost 200 jobs over the month but increased by 600 jobs from last August.

Total nonfarm employment for the Monroe MSA was estimated at 78,400 for August 2014. This shows a loss of 200 jobs over the month but a gain of 600 jobs over the year. Goods-producing employment showed no net change over the month while increasing by 500 jobs over the year. The service-providing sector lost 200 jobs over the month, while gaining 100 jobs over the year.

Total nonfarm employment for the New Orleans MSA was estimated at 554,900 for August 2014. This represents gain over the month of 1,800 and an increase of 8,200 jobs over the year. Goods-producing employment showed a gain of 400 jobs from July and 400 jobs from last year. The service-providing sector gained 1,400 jobs from last month and gained 7,800 jobs from last August.

Total nonfarm employment for the Shreveport MSA was estimated at 173,000 for August 2014. This shows a loss of 100 jobs over the month but an increase of 1,900 jobs over the year. Goods-producing employment showed no change over the month but added 400 jobs from August 2013. Service-providing employment lost 100 jobs over the month while adding 1,500 jobs over the year.

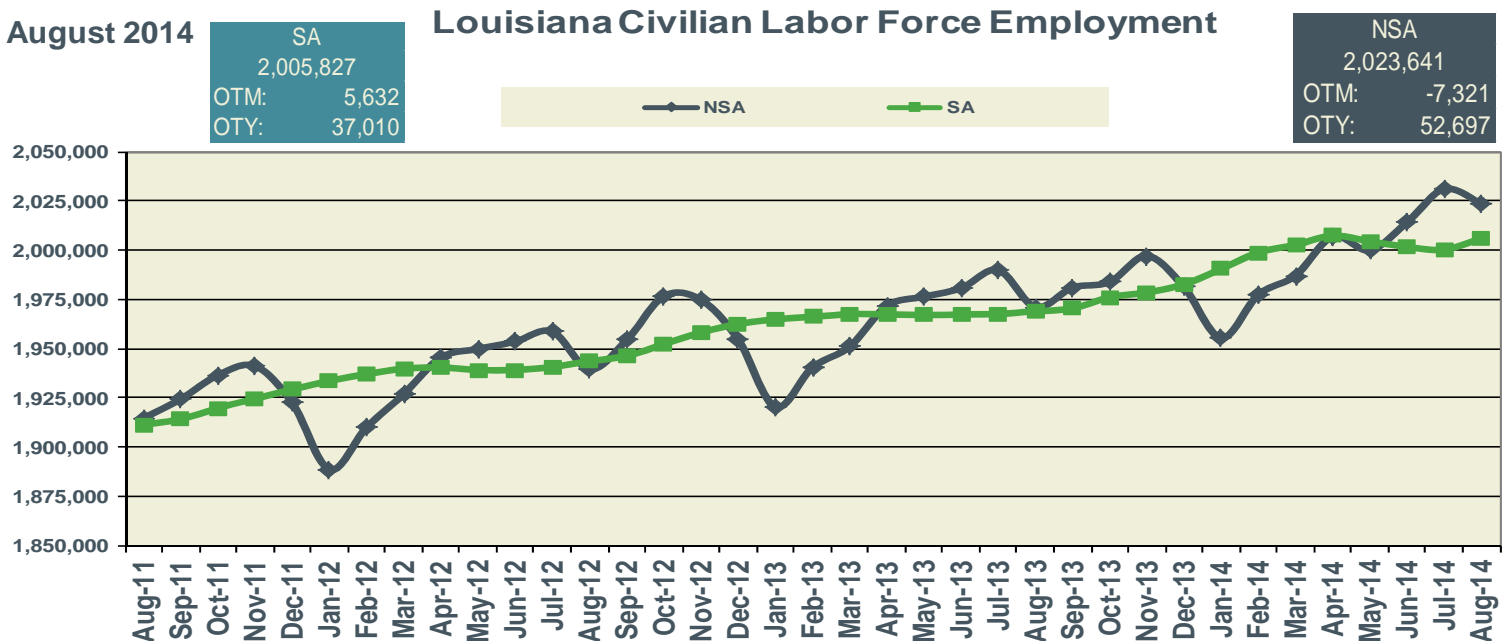
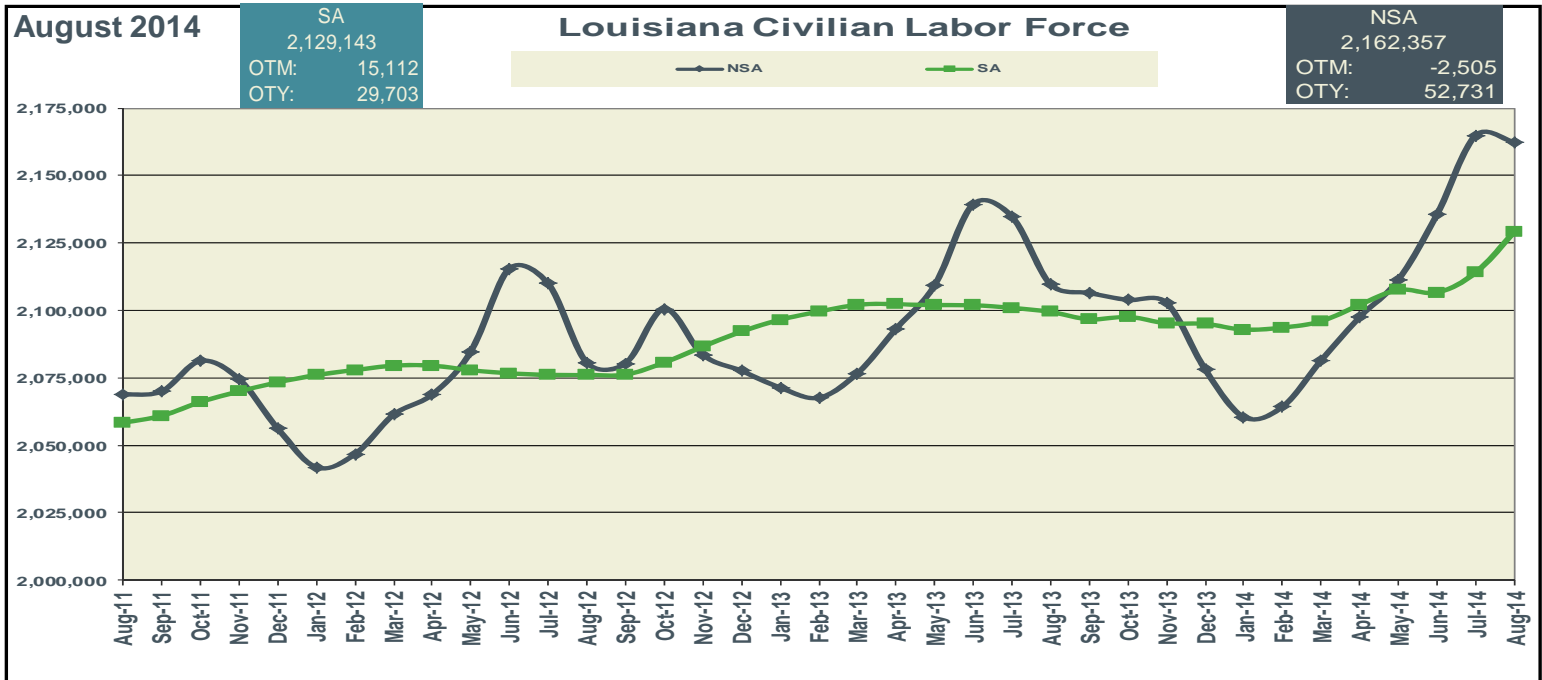
## Keys to Graphs

The following graphs have been designed to reflect the over-the-year trends in the statistical data. Below are the most frequently used abbreviations.

- OTM over-the-month change in employment
- OTY over-the-year change in employment
- SA seasonally adjusted estimates
- NSA not seasonally adjusted estimates

Graphs for statewide reflect seasonally adjusted (SA) estimates compared to not seasonally adjusted (NSA) data.

Metropolitan Statistical Area (MSAs) graphs reflect seasonally adjusted (SA) nonfarm employment levels compared to not seasonally adjusted (NSA) data.

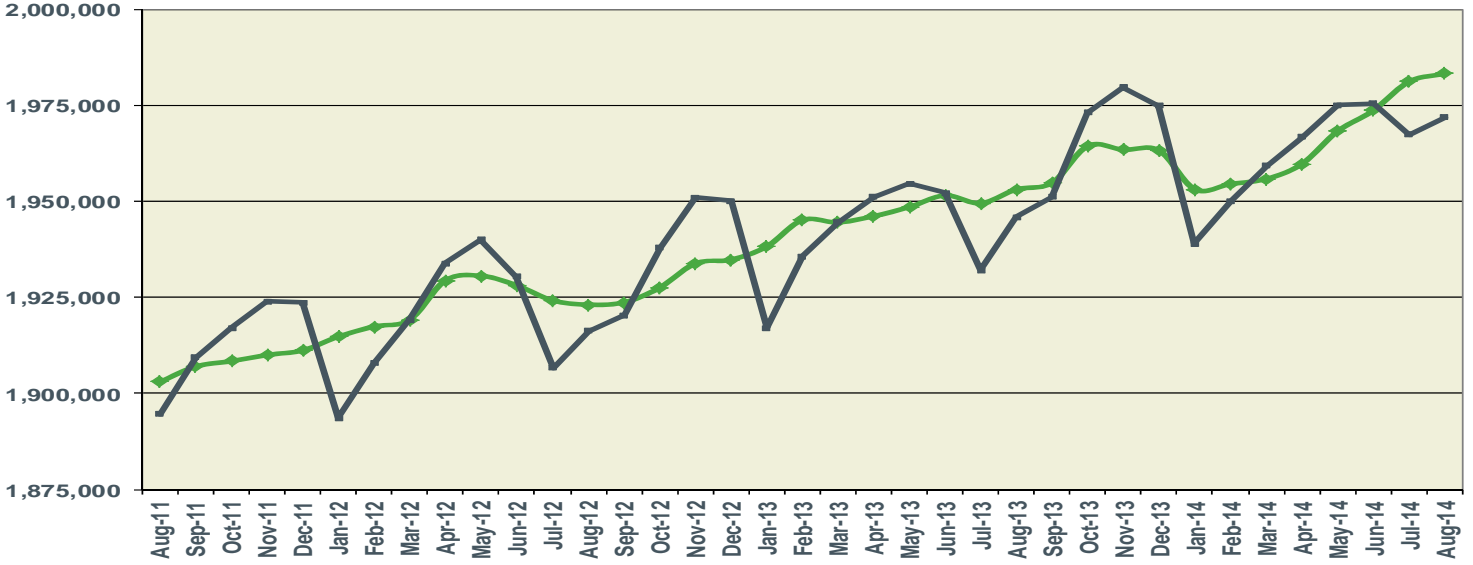


August 2014

**SA**  
1,983,200  
OTM: 2,100  
OTY: 30,100

**Louisiana Nonfarm Employment**

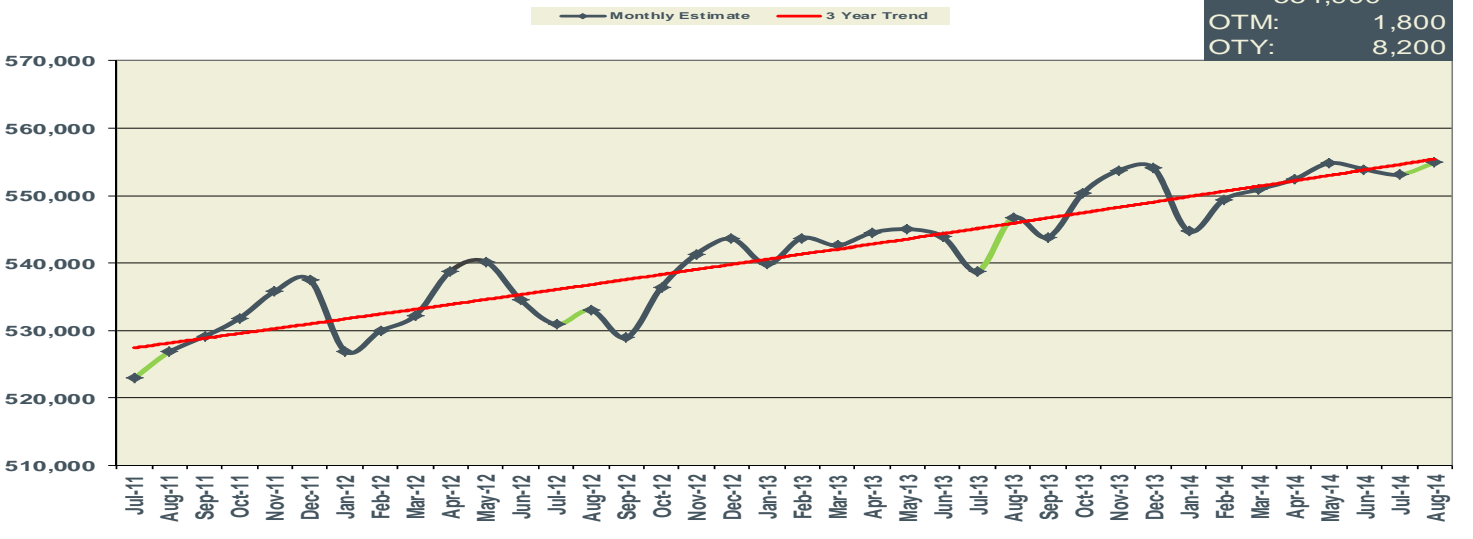
**NSA**  
1,971,900  
OTM: 4,600  
OTY: 26,000



August 2014

**New Orleans MSA Nonfarm Employment**

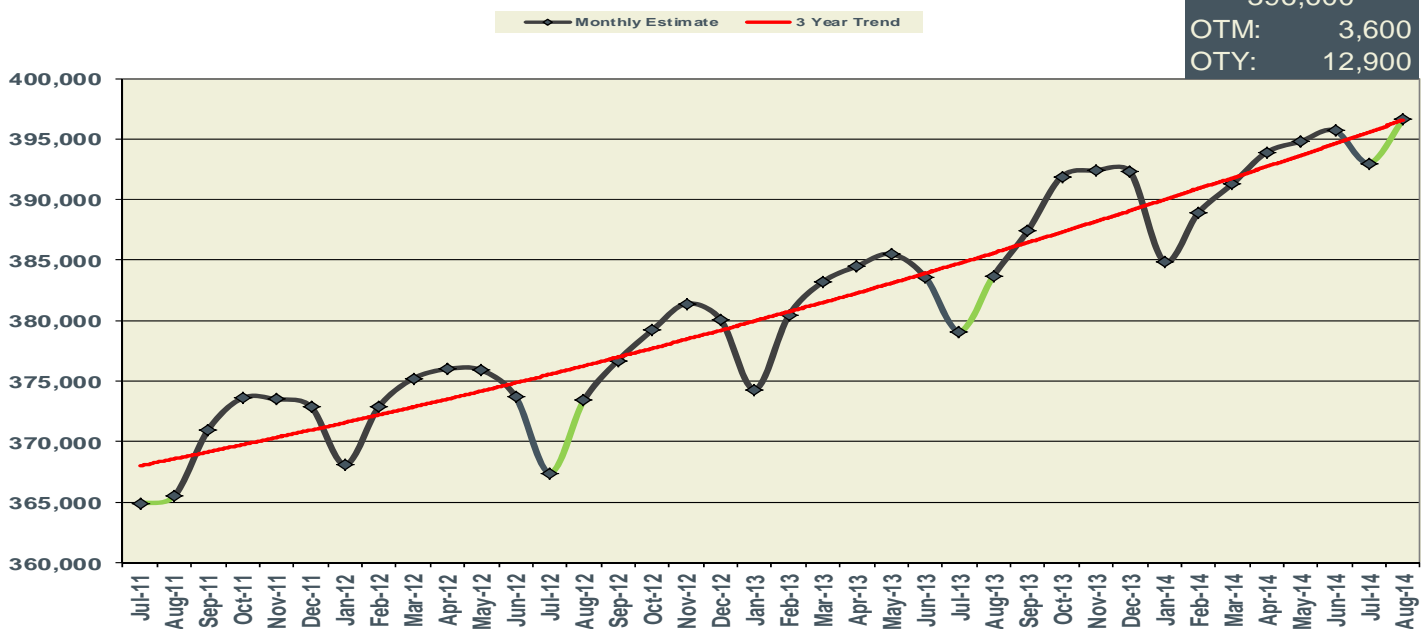
**NSA**  
554,900  
OTM: 1,800  
OTY: 8,200



August 2014

**Baton Rouge MSA Nonfarm Employment**

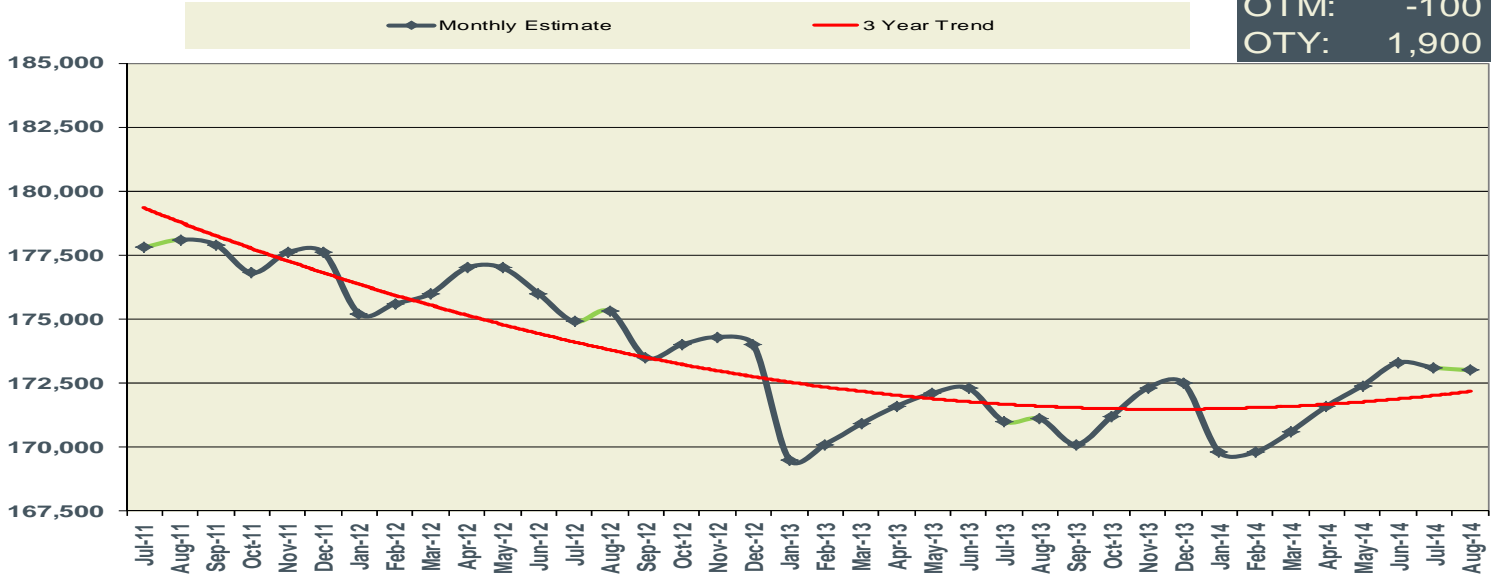
**NSA**  
396,600  
OTM: 3,600  
OTY: 12,900



August 2014

Shreveport MSA Nonfarm Employment

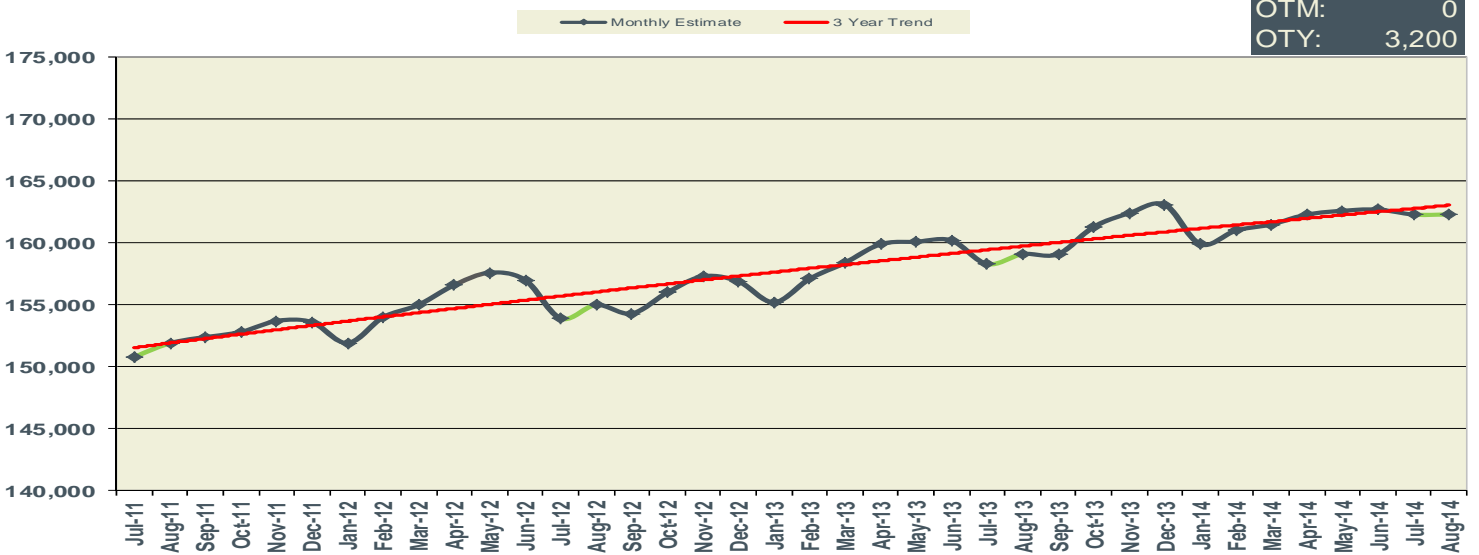
NSA  
173,000  
OTM: -100  
OTY: 1,900



August 2014

Lafayette MSA Nonfarm Employment

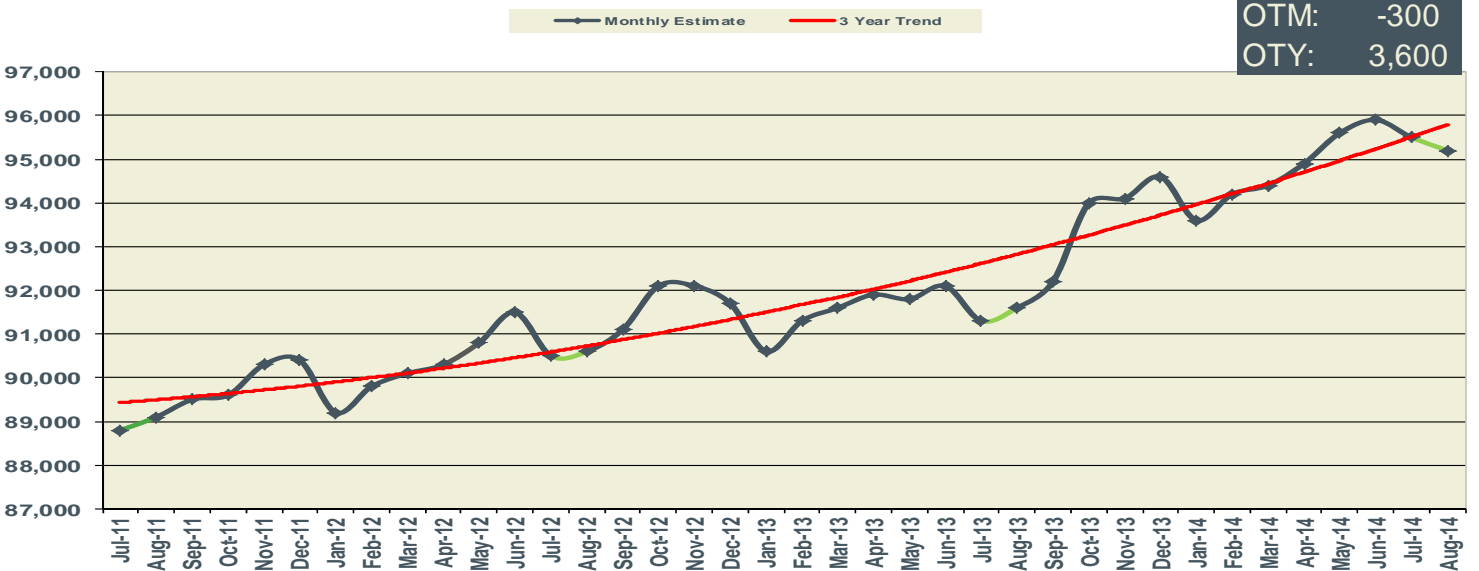
NSA  
162,300  
OTM: 0  
OTY: 3,200



August 2014

Lake Charles MSA Nonfarm Employment

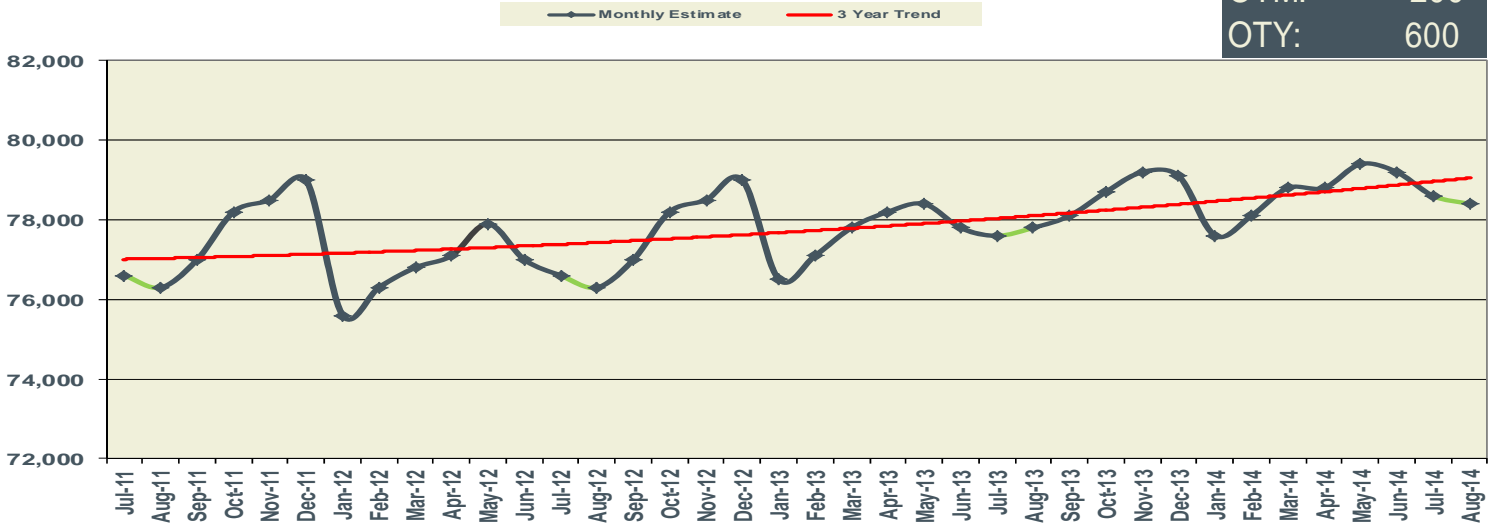
NSA  
95,200  
OTM: -300  
OTY: 3,600



August 2014

### Monroe MSA Nonfarm Employment

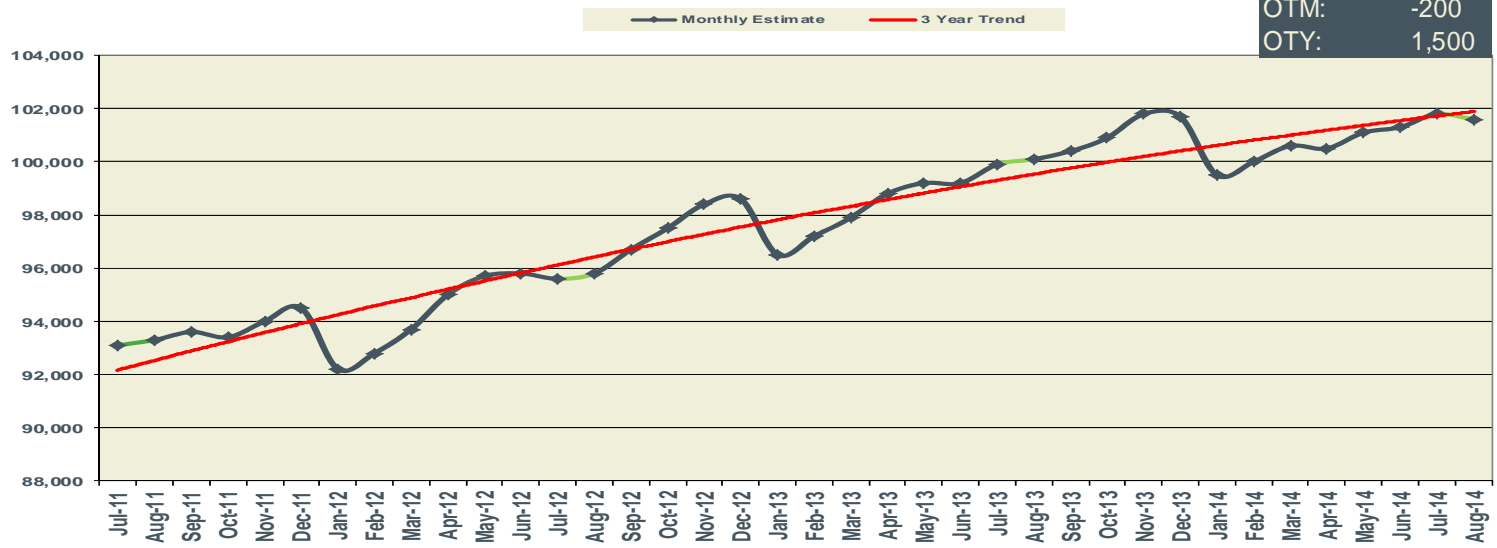
NSA	78,400
OTM:	-200
OTY:	600



August 2014

### Houma MSA Nonfarm Employment

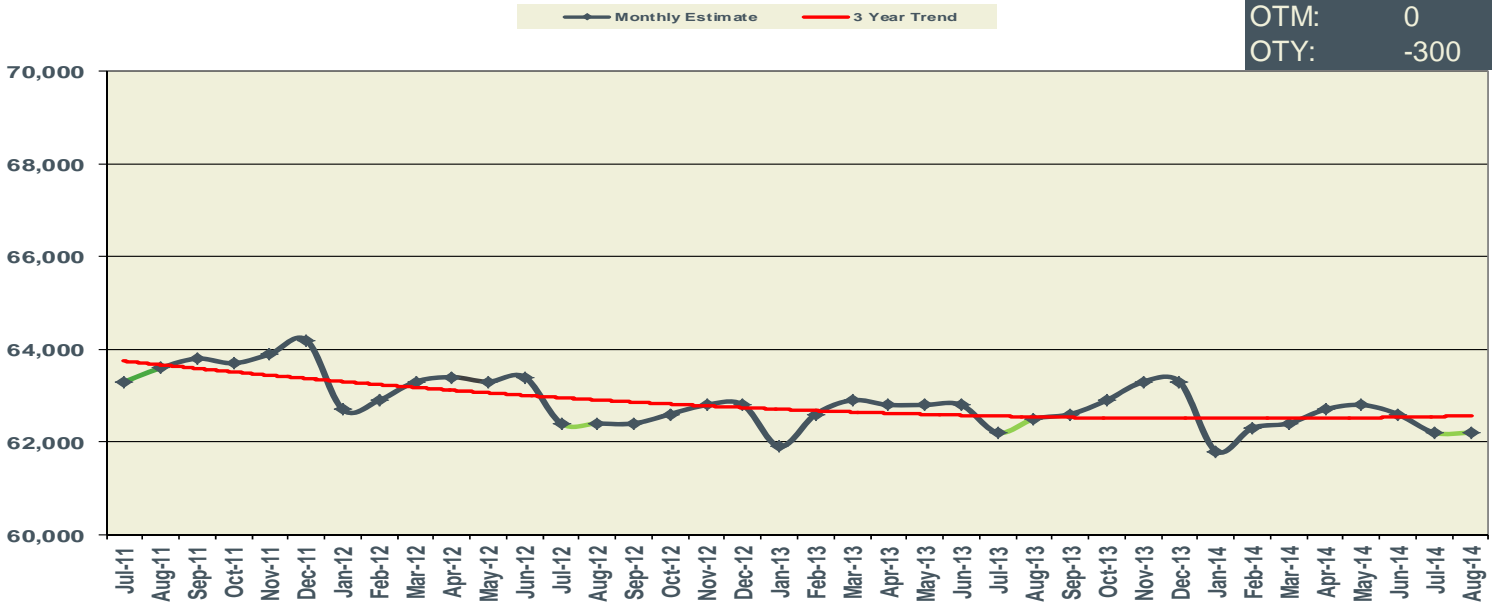
NSA	101,600
OTM:	-200
OTY:	1,500



August 2014

### Alexandria MSA Nonfarm Employment

NSA	62,200
OTM:	0
OTY:	-300



<i>Louisiana - Seasonally Adjusted</i>	Prel.	Rev.		OTM	OTM	OTY	OTY
	Aug	July	Aug	Change	%	Change	%
	2014	2014	2013		Change		Change
Total Nonfarm	1,983,200	1,981,100	1,953,100	2,100	0.11%	30,100	1.54%
Total Private	1,649,300	1,646,500	1,612,900	2,800	0.17%	36,400	2.26%
Goods-Producing	341,600	339,600	329,600	2,000	0.59%	12,000	3.64%
Mining and Logging	54,100	53,800	54,500	300	0.56%	-400	-0.73%
Construction	140,600	139,500	131,100	1,100	0.79%	9,500	7.25%
Manufacturing	146,900	146,300	144,000	600	0.41%	2,900	2.01%
Durable Goods	76,400	76,300	74,600	100	0.13%	1,800	2.41%
Nondurable Goods	70,500	70,000	69,400	500	0.71%	1,100	1.59%
Service-Providing	1,641,600	1,641,500	1,623,500	100	0.01%	18,100	1.11%
Private Service-Providing	1,307,700	1,306,900	1,283,300	800	0.06%	24,400	1.90%
Trade, Transportation, and Utilities	389,800	390,600	384,100	-800	-0.20%	5,700	1.48%
Retail Trade	225,600	224,400	225,600	1,200	0.53%	0	0.00%
Transportation, Warehousing, and Utilities	90,000	91,100	85,000	-1,100	-1.21%	5,000	5.88%
Information	23,400	22,900	25,600	500	2.18%	-2,200	-8.59%
Financial Activities	95,200	95,700	95,500	-500	-0.52%	-300	-0.31%
Real Estate and Rental and Leasing	34,600	34,400	33,100	200	0.58%	1,500	4.53%
Professional and Business Services	215,300	214,100	207,300	1,200	0.56%	8,000	3.86%
Professional, Scientific, and Technical Services	87,800	88,600	86,600	-800	-0.90%	1,200	1.39%
Management of Companies and Enterprises	25,400	25,200	25,200	200	0.79%	200	0.79%
Admin. and Support and Waste Mgmt. and Remediation Serv.	102,100	100,300	95,500	1,800	1.79%	6,600	6.91%
Education and Health Services	297,400	295,100	290,400	2,300	0.78%	7,000	2.41%
Educational Services	46,000	45,200	41,800	800	1.77%	4,200	10.05%
Health Care and Social Assistance	251,400	249,900	248,600	1,500	0.60%	2,800	1.13%
Leisure and Hospitality	222,100	223,100	214,700	-1,000	-0.45%	7,400	3.45%
Arts, Entertainment, and Recreation	29,000	29,000	29,600	0	0.00%	-600	-2.03%
Accommodation and Food Services	193,100	194,100	185,100	-1,000	-0.52%	8,000	4.32%
Other Services	64,500	65,400	65,700	-900	-1.38%	-1,200	-1.83%
Government	333,900	334,600	340,200	-700	-0.21%	-6,300	-1.85%
Federal Government	30,200	30,000	30,400	200	0.67%	-200	-0.66%
State Government	93,700	94,400	97,700	-700	-0.74%	-4,000	-4.09%
Local Government	210,000	210,200	212,100	-200	-0.10%	-2,100	-0.99%

<i>MSAs - Seasonally Adjusted</i>	Prel.	Rev.		OTM	OTM	OTY	OTY
	Aug	July	Aug	Change	%	Change	%
	2014	2014	2013		Change		Change
Alexandria Total Nonfarm	62,100	62,400	62,600	-300	-0.48%	-500	-0.80%
Baton Rouge Total Nonfarm	399,000	397,100	385,700	1,900	0.48%	13,300	3.45%
Houma Total Nonfarm	101,200	101,800	100,100	-600	-0.59%	1,100	1.10%
Lafayette Total Nonfarm	163,200	163,300	159,000	-100	-0.06%	4,200	2.64%
Lake Charles Total Nonfarm	95,300	95,800	92,000	-500	-0.52%	3,300	3.59%
Monroe Total Nonfarm	79,000	79,100	78,400	-100	-0.13%	600	0.77%
New Orleans Total Nonfarm	557,000	556,500	548,200	500	0.09%	8,800	1.61%
Shreveport Total Nonfarm	172,700	173,000	170,400	-300	-0.17%	2,300	1.35%



<i>Louisiana - Not Seasonally Adjusted</i>	Prel.	Rev.		OTM	OTM	OTY	OTY
	Aug	July	Aug	Change	%	Change	%
	2014	2014	2013		Change		Change
Total Nonfarm	1,971,900	1,967,300	1,945,900	4,600	0.23%	26,000	1.34%
Total Private	1,648,100	1,644,800	1,616,200	3,300	0.20%	31,900	1.97%
Goods-Producing	341,600	340,300	331,500	1,300	0.38%	10,100	3.05%
Mining & Logging	54,500	54,100	55,200	400	0.74%	-700	-1.27%
Oil & Gas Extraction	10,600	10,600	10,000	0	0.00%	600	6.00%
Crude Petroleum & Natural Gas Extraction	10,000	9,900	9,600	100	1.01%	400	4.17%
Support Activities for Mining	41,900	41,400	41,200	500	1.21%	700	1.70%
Drilling Oil & Gas Wells	7,300	7,300	7,500	0	0.00%	-200	-2.67%
Construction	140,700	140,100	131,500	600	0.43%	9,200	7.00%
Construction of Buildings	25,600	25,400	24,600	200	0.79%	1,000	4.07%
Residential Building Construction	5,500	5,500	5,600	0	0.00%	-100	-1.79%
Nonresidential Building Construction	20,100	19,900	19,000	200	1.01%	1,100	5.79%
Heavy & Civil Engineering Construction	45,600	44,700	40,400	900	2.01%	5,200	12.87%
Specialty Trade Contractors	69,500	70,000	66,500	-500	-0.71%	3,000	4.51%
Manufacturing	146,400	146,100	144,800	300	0.21%	1,600	1.10%
Durable Goods	76,600	76,500	75,200	100	0.13%	1,400	1.86%
Transportation Equipment Manufacturing	13,400	13,500	14,200	-100	-0.74%	-800	-5.63%
Ship & Boat Building	10,100	10,200	10,000	-100	-0.98%	100	1.00%
Nondurable Goods	69,800	69,600	69,600	200	0.29%	200	0.29%
Food Manufacturing	15,800	15,600	16,100	200	1.28%	-300	-1.86%
Paper Manufacturing	7,100	7,100	7,200	0	0.00%	-100	-1.39%
Petroleum & Coal Products Manufacturing	11,800	11,700	11,700	100	0.85%	100	0.85%
Chemical Manufacturing	23,700	23,600	23,400	100	0.42%	300	1.28%
Basic Chemical Manufacturing	11,900	11,900	11,800	0	0.00%	100	0.85%
Service-Providing	1,630,300	1,627,000	1,614,400	3,300	0.20%	15,900	0.98%
Private Service-Providing	1,306,500	1,304,500	1,284,700	2,000	0.15%	21,800	1.70%
Trade, Transportation, & Utilities	388,800	389,600	382,900	-800	-0.21%	5,900	1.54%
Wholesale Trade	74,100	74,800	73,700	-700	-0.94%	400	0.54%
Merchant Wholesalers, Durable Goods	40,300	40,200	39,500	100	0.25%	800	2.03%
Merchant Wholesalers, Nondurable Goods	25,200	25,100	25,300	100	0.40%	-100	-0.40%
Retail Trade	224,100	223,700	223,800	400	0.18%	300	0.13%
Motor Vehicle & Parts Dealers	29,100	29,000	28,400	100	0.34%	700	2.46%
Building Material & Garden Equipment & Supplies Dealers	19,900	20,100	19,700	-200	-1.00%	200	1.02%
Food & Beverage Stores	38,400	38,300	37,400	100	0.26%	1,000	2.67%
Grocery Stores	33,500	33,400	32,800	100	0.30%	700	2.13%
Health & Personal Care Stores	16,000	16,200	15,900	-200	-1.23%	100	0.63%
Gasoline Stations	19,600	19,500	19,400	100	0.51%	200	1.03%
Clothing and Clothing Accessories Stores	17,200	17,300	17,500	-100	-0.58%	-300	-1.71%
General Merchandise Stores	50,200	50,400	51,500	-200	-0.40%	-1,300	-2.52%
Department Stores	11,000	11,000	11,900	0	0.00%	-900	-7.56%
Transportation, Warehousing, & Utilities	90,600	91,100	85,400	-500	-0.55%	5,200	6.09%
Transportation and Warehousing	81,300	81,700	76,300	-400	-0.49%	5,000	6.55%
Truck Transportation	18,600	18,500	18,200	100	0.54%	400	2.20%
Support Activities for Transportation	20,600	20,900	20,100	-300	-1.44%	500	2.49%

<i>Louisiana - Not Seasonally Adjusted</i>	Prel.	Rev.		OTM	OTM	OTY	OTY
	Aug	July	Aug	Change	%	Change	%
	2014	2014	2013		Change		Change
Information	23,400	22,900	25,600	500	2.18%	-2,200	-8.59%
Telecommunications	9,300	9,400	9,600	-100	-1.06%	-300	-3.13%
Financial Activities	96,000	96,300	95,500	-300	-0.31%	500	0.52%
Finance & Insurance	60,900	61,700	62,300	-800	-1.30%	-1,400	-2.25%
Credit Intermediation & Related Activities	31,800	32,000	32,500	-200	-0.63%	-700	-2.15%
Depository Credit Intermediation	21,100	21,200	21,700	-100	-0.47%	-600	-2.76%
Insurance Carriers & Related Activities	26,200	26,300	25,900	-100	-0.38%	300	1.16%
Real Estate & Rental & Leasing	35,100	34,600	33,200	500	1.45%	1,900	5.72%
Professional & Business Services	214,300	213,600	208,200	700	0.33%	6,100	2.93%
Professional, Scientific, & Technical Services	87,000	88,100	85,900	-1,100	-1.25%	1,100	1.28%
Legal Services	20,500	20,500	19,700	0	0.00%	800	4.06%
Accounting, Tax Preparation, Bookkeeping & Payroll Services	12,800	13,000	11,300	-200	-1.54%	1,500	13.27%
Architectural, Engineering, & Related Services	25,100	25,300	24,900	-200	-0.79%	200	0.80%
Management of Companies & Enterprises	25,500	25,300	25,200	200	0.79%	300	1.19%
Admin. & Support & Waste Mgmt. & Remediation Serv.	101,800	100,200	97,100	1,600	1.60%	4,700	4.84%
Administrative & Support Services	92,100	90,100	88,000	2,000	2.22%	4,100	4.66%
Employment Services	36,100	34,500	34,000	1,600	4.64%	2,100	6.18%
Services to Buildings & Dwellings	22,100	22,000	21,800	100	0.45%	300	1.38%
Education & Health Services	295,700	291,600	289,400	4,100	1.41%	6,300	2.18%
Educational Services	43,500	41,200	40,000	2,300	5.58%	3,500	8.75%
Colleges, Universities, & Professional Schools	11,200	11,100	12,000	100	0.90%	-800	-6.67%
Health Care & Social Assistance	252,200	250,400	249,400	1,800	0.72%	2,800	1.12%
Ambulatory Health Care Services	93,200	91,600	92,100	1,600	1.75%	1,100	1.19%
Offices of Physicians	36,000	35,500	34,500	500	1.41%	1,500	4.35%
Home Health Care Services	22,300	22,100	23,400	200	0.90%	-1,100	-4.70%
Hospitals	69,700	69,500	68,400	200	0.29%	1,300	1.90%
Nursing & Residential Care Facilities	45,100	45,200	43,000	-100	-0.22%	2,100	4.88%
Nursing Care Facilities	27,200	27,100	26,500	100	0.37%	700	2.64%
Social Assistance	44,200	44,100	45,900	100	0.23%	-1,700	-3.70%
Leisure & Hospitality	223,900	225,100	217,300	-1,200	-0.53%	6,600	3.04%
Arts, Entertainment, & Recreation	30,200	30,100	31,400	100	0.33%	-1,200	-3.82%
Amusement, Gambling, & Recreation Industries	23,600	24,300	24,200	-700	-2.88%	-600	-2.48%
Gambling Industries	10,900	11,000	11,400	-100	-0.91%	-500	-4.39%
Accommodation & Food Services	193,700	195,000	185,900	-1,300	-0.67%	7,800	4.20%
Accommodation	32,000	32,500	30,000	-500	-1.54%	2,000	6.67%
Food Services & Drinking Places	161,700	162,500	155,900	-800	-0.49%	5,800	3.72%
Other Services	64,400	65,400	65,800	-1,000	-1.53%	-1,400	-2.13%
Repair & Maintenance	18,200	19,000	18,800	-800	-4.21%	-600	-3.19%
Automotive Repair & Maintenance	10,100	10,300	10,500	-200	-1.94%	-400	-3.81%
Personal & Laundry Services	16,200	16,200	16,200	0	0.00%	0	0.00%
Government	323,800	322,500	329,700	1,300	0.40%	-5,900	-1.79%
Federal Government	30,200	30,200	30,400	0	0.00%	-200	-0.66%
State Government	90,500	89,000	94,300	1,500	1.69%	-3,800	-4.03%
Local Government	203,100	203,300	205,000	-200	-0.10%	-1,900	-0.93%

## LOUISIANA &amp; MSAs NONFARM EMPLOYMENT

11

<i>New Orleans-Metairie-Kenner MSA - Not Seasonally Adjusted</i>	Prel.	Rev.		OTM	OTM	OTY	OTY
	Aug 2014	July 2014	Aug 2013	Change	% Change	Change	% Change
<b>Total Nonfarm</b>	554,900	553,100	546,700	1,800	0.33%	8,200	1.50%
<b>Total Private</b>	481,800	481,300	472,100	500	0.10%	9,700	2.05%
<b>Goods-Producing</b>	69,700	69,300	69,300	400	0.58%	400	0.58%
Mining & Logging	7,800	7,800	7,800	0	0.00%	0	0.00%
Construction	32,300	32,000	31,700	300	0.94%	600	1.89%
Heavy & Civil Engineering Construction	8,700	8,300	7,800	400	4.82%	900	11.54%
Specialty Trade Contractors	17,700	17,800	17,500	-100	-0.56%	200	1.14%
Manufacturing	29,600	29,500	29,800	100	0.34%	-200	-0.67%
Durable Goods	13,400	13,400	13,700	0	0.00%	-300	-2.19%
Transportation Equipment Manufacturing	4,200	4,400	4,600	-200	-4.55%	-400	-8.70%
Ship & Boat Building	2,700	2,900	3,400	-200	-6.90%	-700	-20.59%
Nondurable Goods	16,200	16,100	16,100	100	0.62%	100	0.62%
Chemical Manufacturing	4,400	4,400	4,300	0	0.00%	100	2.33%
Service-Providing	485,200	483,800	477,400	1,400	0.29%	7,800	1.63%
Private Service-Providing	412,100	412,000	402,800	100	0.02%	9,300	2.31%
Trade, Transportation, & Utilities	111,700	112,000	110,200	-300	-0.27%	1,500	1.36%
Wholesale Trade	22,900	23,100	23,200	-200	-0.87%	-300	-1.29%
Merchant Wholesalers, Durable Goods	11,000	11,000	10,900	0	0.00%	100	0.92%
Merchant Wholesalers, Nondurable Goods	7,900	7,900	7,900	0	0.00%	0	0.00%
Retail Trade	60,000	60,100	60,300	-100	-0.17%	-300	-0.50%
Grocery Stores	9,900	9,800	9,800	100	1.02%	100	1.02%
General Merchandise Stores	12,600	12,600	12,600	0	0.00%	0	0.00%
Transportation, Warehousing, & Utilities	28,800	28,800	26,700	0	0.00%	2,100	7.87%
Information	8,000	7,900	9,000	100	1.27%	-1,000	-11.11%
Financial Activities	27,900	27,800	27,500	100	0.36%	400	1.45%
Finance & Insurance	18,900	19,000	18,900	-100	-0.53%	0	0.00%
Credit Intermediation & Related Activities	7,600	7,700	7,700	-100	-1.30%	-100	-1.30%
Depository Credit Intermediation	5,400	5,400	5,600	0	0.00%	-200	-3.57%
Professional & Business Services	74,700	75,000	72,200	-300	-0.40%	2,500	3.46%
Professional, Scientific, & Technical Services	33,300	33,500	31,600	-200	-0.60%	1,700	5.38%
Legal Services	8,700	8,600	8,700	100	1.16%	0	0.00%
Management of Companies & Enterprises	8,300	8,200	8,100	100	1.22%	200	2.47%
Admin. & Support & Waste Mgmt. & Remediation Serv.	33,100	33,300	32,500	-200	-0.60%	600	1.85%
Administrative & Support Services	31,500	30,800	30,300	700	2.27%	1,200	3.96%
Employment Services	12,400	11,800	11,400	600	5.08%	1,000	8.77%
Education & Health Services	88,900	86,500	83,300	2,400	2.77%	5,600	6.72%
Educational Services	29,500	28,100	25,900	1,400	4.98%	3,600	13.90%
Colleges, Universities, & Professional Schools	9,700	9,600	9,800	100	1.04%	-100	-1.02%
Health Care & Social Assistance	59,400	58,400	57,400	1,000	1.71%	2,000	3.48%
Ambulatory Health Care Services	22,000	21,500	21,500	500	2.33%	500	2.33%
Hospitals	20,200	20,000	18,900	200	1.00%	1,300	6.88%
Leisure & Hospitality	80,200	82,000	80,200	-1,800	-2.20%	0	0.00%
Arts, Entertainment, & Recreation	11,300	11,000	11,700	300	2.73%	-400	-3.42%
Amusement, Gambling, & Recreation Industries	6,200	6,400	6,900	-200	-3.13%	-700	-10.14%
Gambling Industries	1,900	2,000	2,000	-100	-5.00%	-100	-5.00%
Accommodation & Food Services	68,900	71,000	68,500	-2,100	-2.96%	400	0.58%
Accommodation	15,200	15,500	13,900	-300	-1.94%	1,300	9.35%
Food Services & Drinking Places	53,700	55,500	54,600	-1,800	-3.24%	-900	-1.65%
Other Services	20,700	20,800	20,400	-100	-0.48%	300	1.47%
Government	73,100	71,800	74,600	1,300	1.81%	-1,500	-2.01%
Federal Government	11,900	11,900	12,000	0	0.00%	-100	-0.83%
State Government	15,300	14,500	16,400	800	5.52%	-1,100	-6.71%
Local Government	45,900	45,400	46,200	500	1.10%	-300	-0.65%
<b>Alexandria MSA - Not Seasonally Adjusted</b>	<b>Prel.</b>	<b>Rev.</b>		<b>OTM</b>	<b>OTM</b>	<b>OTY</b>	<b>OTY</b>
	<b>Aug</b>	<b>July</b>	<b>Aug</b>	<b>Change</b>	<b>%</b>	<b>Change</b>	<b>%</b>
	<b>2014</b>	<b>2014</b>	<b>2013</b>		<b>Change</b>		<b>Change</b>
<b>Total Nonfarm</b>	62,200	62,200	62,500	0	0.00%	-300	-0.48%
<b>Total Private</b>	48,900	49,000	49,000	-100	-0.20%	-100	-0.20%
<b>Goods-Producing</b>	8,500	8,600	8,500	-100	-1.16%	0	0.00%
<b>Service-Providing</b>	53,700	53,600	54,000	100	0.19%	-300	-0.56%
Private Service-Providing	40,400	40,400	40,500	0	0.00%	-100	-0.25%
Trade, Transportation, & Utilities	11,300	11,300	11,300	0	0.00%	0	0.00%
Retail Trade	7,800	7,800	7,800	0	0.00%	0	0.00%
Hospitals	4,200	4,200	4,200	0	0.00%	0	0.00%
Government	13,300	13,200	13,500	100	0.76%	-200	-1.48%
Federal Government	3,000	3,000	3,000	0	0.00%	0	0.00%
State Government	3,600	3,600	3,800	0	0.00%	-200	-5.26%
Local Government	6,700	6,600	6,700	100	1.52%	0	0.00%

<i>Baton Rouge MSA - Not Seasonally Adjusted</i>	Prel.	Rev.		OTM	OTM	OTY	OTY
	Aug 2014	July 2014	Aug 2013	Change	% Change	Change	% Change
<b>Total Nonfarm</b>	396,600	393,000	383,700	3,600	0.92%	12,900	3.36%
<b>Total Private</b>	325,000	324,000	312,600	1,000	0.31%	12,400	3.97%
<b>Goods-Producing</b>	81,600	81,200	73,100	400	0.49%	8,500	11.63%
Mining & Logging	1,300	1,300	1,300	0	0.00%	0	0.00%
<b>Construction</b>	52,300	52,000	44,300	300	0.58%	8,000	18.06%
Construction of Buildings	8,800	8,800	7,800	0	0.00%	1,000	12.82%
Nonresidential Building Construction	7,500	7,300	6,600	200	2.74%	900	13.64%
Heavy & Civil Engineering Construction	18,700	18,200	15,000	500	2.75%	3,700	24.67%
Specialty Trade Contractors	24,800	25,000	21,500	-200	-0.80%	3,300	15.35%
Manufacturing	28,000	27,900	27,500	100	0.36%	500	1.82%
Nondurable Goods	17,600	17,500	17,500	100	0.57%	100	0.57%
Chemical Manufacturing	9,900	9,900	9,800	0	0.00%	100	1.02%
Basic Chemical Manufacturing	5,400	5,300	5,300	100	1.89%	100	1.89%
<b>Service-Providing</b>	315,000	311,800	310,600	3,200	1.03%	4,400	1.42%
<b>Private Service-Providing</b>	243,400	242,800	239,500	600	0.25%	3,900	1.63%
Trade, Transportation, & Utilities	67,500	67,500	67,700	0	0.00%	-200	-0.30%
Wholesale Trade	14,100	14,100	13,900	0	0.00%	200	1.44%
Retail Trade	40,300	40,400	40,900	-100	-0.25%	-600	-1.47%
Grocery Stores	6,000	5,900	5,900	100	1.69%	100	1.69%
General Merchandise Stores	8,900	8,900	9,200	0	0.00%	-300	-3.26%
Department Stores	1,800	1,800	1,900	0	0.00%	-100	-5.26%
Transportation, Warehousing, & Utilities	13,100	13,000	12,900	100	0.77%	200	1.55%
Information	5,900	5,800	5,900	100	1.72%	0	0.00%
Financial Activities	17,900	17,800	17,700	100	0.56%	200	1.13%
Finance & Insurance	12,000	12,000	12,100	0	0.00%	-100	-0.83%
Depository Credit Intermediation	4,100	4,100	4,200	0	0.00%	-100	-2.38%
Professional & Business Services	45,800	46,500	45,100	-700	-1.51%	700	1.55%
Professional, Scientific, & Technical Services	19,200	19,900	19,800	-700	-3.52%	-600	-3.03%
Admin. & Support & Waste Mgmt. & Remediation Serv.	20,500	20,300	19,700	200	0.99%	800	4.06%
Education & Health Services	54,200	53,100	52,200	1,100	2.07%	2,000	3.83%
Health Care & Social Assistance	47,400	46,500	46,300	900	1.94%	1,100	2.38%
Ambulatory Health Care Services	20,700	20,400	20,100	300	1.47%	600	2.99%
Hospitals	12,600	12,600	12,300	0	0.00%	300	2.44%
Leisure & Hospitality	38,100	38,100	37,000	0	0.00%	1,100	2.97%
Accommodation & Food Services	32,100	32,000	30,900	100	0.31%	1,200	3.88%
Food Services & Drinking Places	29,200	29,100	28,200	100	0.34%	1,000	3.55%
Other Services	14,000	14,000	13,900	0	0.00%	100	0.72%
<b>Government</b>	71,600	69,000	71,100	2,600	3.77%	500	0.70%
Federal Government	2,800	2,800	2,800	0	0.00%	0	0.00%
State Government	36,600	34,700	37,800	1,900	5.48%	-1,200	-3.17%
Local Government	32,200	31,500	30,500	700	2.22%	1,700	5.57%

<i>Houma-Bayou Cane-Thibodaux MSA - Not Seasonally Adjusted</i>	Prel.	Rev.		OTM	OTM	OTY	OTY
	Aug 2014	July 2014	Aug 2013	Change	% Change	Change	% Change
<b>Total Nonfarm</b>	101,600	101,800	100,100	-200	-0.20%	1,500	1.50%
<b>Total Private</b>	88,700	88,700	87,200	0	0.00%	1,500	1.72%
<b>Goods-Producing</b>	24,300	24,100	23,700	200	0.83%	600	2.53%
Mining & Logging	7,800	7,700	7,600	100	1.30%	200	2.63%
Support Activities for Mining	6,400	6,200	6,300	200	3.23%	100	1.59%
Construction	5,900	5,900	5,500	0	0.00%	400	7.27%
<b>Service-Providing</b>	77,300	77,700	76,400	-400	-0.51%	900	1.18%
<b>Private Service-Providing</b>	64,400	64,600	63,500	-200	-0.31%	900	1.42%
Trade, Transportation, & Utilities	28,400	28,700	27,300	-300	-1.05%	1,100	4.03%
Retail Trade	10,800	10,900	10,900	-100	-0.92%	-100	-0.92%
Support Activities for Transportation	6,200	6,300	5,900	-100	-1.59%	300	5.08%
Administrative & Support Services	5,100	4,900	5,000	200	4.08%	100	2.00%
Employment Services	3,600	3,300	3,400	300	9.09%	200	5.88%
Leisure & Hospitality	8,300	8,300	8,000	0	0.00%	300	3.75%
<b>Government</b>	12,900	13,100	12,900	-200	-1.53%	0	0.00%
Federal Government	400	400	400	0	0.00%	0	0.00%
State Government	2,400	2,500	2,500	-100	-4.00%	-100	-4.00%
Local Government	10,100	10,200	10,000	-100	-0.98%	100	1.00%

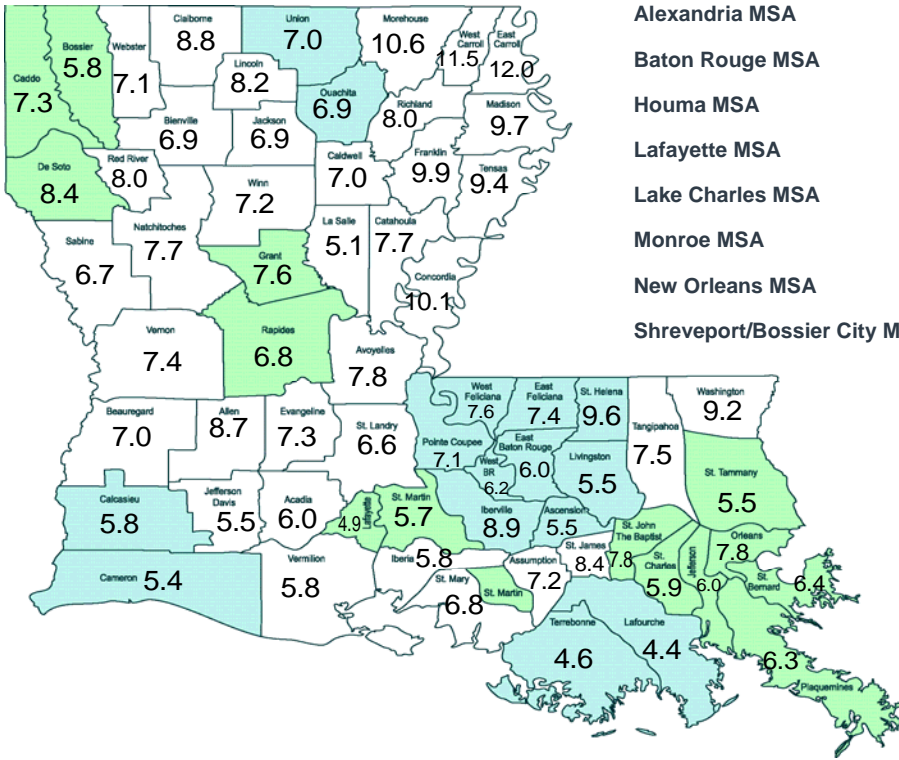
<i>Shreveport-Bossier City MSA - Not Seasonally Adjusted</i>	Prel.	Rev.		OTM	OTM	OTY	OTY
	Aug	July	Aug	Change	%	Change	%
	2014	2014	2013		Change		Change
Total Nonfarm	173,000	173,100	171,100	-100	-0.06%	1,900	1.11%
Total Private	140,500	140,700	138,300	-200	-0.14%	2,200	1.59%
Goods-Producing	22,100	22,100	21,700	0	0.00%	400	1.84%
Mining & Logging	5,100	5,100	4,900	0	0.00%	200	4.08%
Construction	8,200	8,300	8,000	-100	-1.20%	200	2.50%
Manufacturing	8,800	8,700	8,800	100	1.15%	0	0.00%
Service-Providing	150,900	151,000	149,400	-100	-0.07%	1,500	1.00%
Private Service-Providing	118,400	118,600	116,600	-200	-0.17%	1,800	1.54%
Trade, Transportation, & Utilities	34,300	34,500	34,300	-200	-0.58%	0	0.00%
Wholesale Trade	7,500	7,500	7,500	0	0.00%	0	0.00%
Retail Trade	20,800	21,000	21,000	-200	-0.95%	-200	-0.95%
General Merchandise Stores	4,500	4,500	4,600	0	0.00%	-100	-2.17%
Transportation, Warehousing, & Utilities	6,000	6,000	5,800	0	0.00%	200	3.45%
Information	2,400	2,400	2,200	0	0.00%	200	9.09%
Financial Activities	7,000	7,000	7,100	0	0.00%	-100	-1.41%
Professional & Business Services	17,000	17,000	16,700	0	0.00%	300	1.80%
Admin. & Support & Waste Mgmt. & Remediation Serv.	10,700	10,600	10,500	100	0.94%	200	1.90%
Education & Health Services	27,000	26,700	26,500	300	1.12%	500	1.89%
Health Care & Social Assistance	25,000	24,800	24,700	200	0.81%	300	1.21%
Hospitals	9,700	9,700	9,600	0	0.00%	100	1.04%
Leisure & Hospitality	24,700	24,800	23,800	-100	-0.40%	900	3.78%
Arts, Entertainment, & Recreation	5,300	5,400	5,500	-100	-1.85%	-200	-3.64%
Amusement, Gambling, & Recreation Industries	5,100	5,200	5,100	-100	-1.92%	0	0.00%
Gambling Industries	3,900	3,900	4,100	0	0.00%	-200	-4.88%
Accommodation & Food Services	19,400	19,400	18,300	0	0.00%	1,100	6.01%
Food Services & Drinking Places	14,400	14,400	14,200	0	0.00%	200	1.41%
Other Services	6,000	6,200	6,000	-200	-3.23%	0	0.00%
Government	32,500	32,400	32,800	100	0.31%	-300	-0.91%
Federal Government	4,800	4,800	4,900	0	0.00%	-100	-2.04%
State Government	8,700	8,900	9,100	-200	-2.25%	-400	-4.40%
Local Government	19,000	18,700	18,800	300	1.60%	200	1.06%

<i>Monroe MSA - Not Seasonally Adjusted</i>	Prel.	Rev.		OTM	OTM	OTY	OTY
	Aug	July	Aug	Change	%	Change	%
	2014	2014	2013		Change		Change
Total Nonfarm	78,400	78,600	77,800	-200	-0.25%	600	0.77%
Total Private	66,300	66,300	65,400	0	0.00%	900	1.38%
Goods-Producing	11,000	11,000	10,500	0	0.00%	500	4.76%
Manufacturing	6,800	6,700	6,700	100	1.49%	100	1.49%
Nondurable Goods	4,800	4,800	4,800	0	0.00%	0	0.00%
Service-Providing	67,400	67,600	67,300	-200	-0.30%	100	0.15%
Private Service-Providing	55,300	55,300	54,900	0	0.00%	400	0.73%
Trade, Transportation, & Utilities	14,500	14,400	14,300	100	0.69%	200	1.40%
Retail Trade	9,800	9,800	9,800	0	0.00%	0	0.00%
Clothing & Clothing Accessories Stores, General Merchandise	3,100	3,100	3,200	0	0.00%	-100	-3.13%
Professional & Business Services	8,000	8,000	8,000	0	0.00%	0	0.00%
Education & Health Services	15,000	14,900	14,700	100	0.67%	300	2.04%
Hospitals	3,500	3,600	3,600	-100	-2.78%	-100	-2.78%
Leisure & Hospitality	7,600	7,600	7,400	0	0.00%	200	2.70%
Government	12,100	12,300	12,400	-200	-1.63%	-300	-2.42%
Federal Government	500	500	500	0	0.00%	0	0.00%
State Government	3,500	3,600	3,600	-100	-2.78%	-100	-2.78%
Local Government	8,100	8,200	8,300	-100	-1.22%	-200	-2.41%

<i>Lafayette MSA - Not Seasonally Adjusted</i>	Prel.	Rev.		OTM	OTM	OTY	OTY
	Aug	July	Aug	Change	%	Change	%
	2014	2014	2013		Change		Change
Total Nonfarm	162,300	162,300	159,100	0	0.00%	3,200	2.01%
Total Private	146,100	146,400	143,000	-300	-0.20%	3,100	2.17%
Goods-Producing	38,300	38,200	36,900	100	0.26%	1,400	3.79%
Mining & Logging	18,000	18,000	17,600	0	0.00%	400	2.27%
Support Activities for Mining	15,500	15,400	15,300	100	0.65%	200	1.31%
Construction	7,300	7,300	7,000	0	0.00%	300	4.29%
Manufacturing	13,000	12,900	12,300	100	0.78%	700	5.69%
Service-Providing	124,000	124,100	122,200	-100	-0.08%	1,800	1.47%
Private Service-Providing	107,800	108,200	106,100	-400	-0.37%	1,700	1.60%
Trade, Transportation, & Utilities	30,500	30,700	30,000	-200	-0.65%	500	1.67%
Wholesale Trade	7,700	7,800	7,600	-100	-1.28%	100	1.32%
Retail Trade	18,700	18,800	18,400	-100	-0.53%	300	1.63%
General Merchandise Stores	3,400	3,500	3,600	-100	-2.86%	-200	-5.56%
Transportation, Warehousing, & Utilities	4,100	4,100	4,000	0	0.00%	100	2.50%
Information	2,400	2,400	2,500	0	0.00%	-100	-4.00%
Financial Activities	9,000	9,000	8,900	0	0.00%	100	1.12%
Professional & Business Services	19,400	19,300	19,500	100	0.52%	-100	-0.51%
Professional, Scientific, & Technical Services	9,400	9,500	9,200	-100	-1.05%	200	2.17%
Education & Health Services	23,700	23,800	23,800	-100	-0.42%	-100	-0.42%
Health Care & Social Assistance	23,600	23,400	22,900	200	0.85%	700	3.06%
Hospitals	6,300	6,300	6,100	0	0.00%	200	3.28%
Leisure & Hospitality	17,900	18,100	16,700	-200	-1.10%	1,200	7.19%
Accommodation & Food Services	14,900	14,900	14,600	0	0.00%	300	2.05%
Food Services & Drinking Places	13,600	13,600	13,400	0	0.00%	200	1.49%
Other Services	4,900	4,900	4,700	0	0.00%	200	4.26%
Government	16,200	15,900	16,100	300	1.89%	100	0.62%
Federal Government	1,000	1,000	1,000	0	0.00%	0	0.00%
State Government	4,800	4,400	4,700	400	9.09%	100	2.13%
Local Government	10,400	10,500	10,400	-100	-0.95%	0	0.00%
<i>Lake Charles MSA - Not Seasonally Adjusted</i>	Prel.	Rev.		OTM	OTM	OTY	OTY
	Aug	July	Aug	Change	%	Change	%
	2014	2014	2013		Change		Change
Total Nonfarm	95,200	95,500	91,600	-300	-0.31%	3,600	3.93%
Total Private	80,400	80,600	76,500	-200	-0.25%	3,900	5.10%
Goods-Producing	23,400	23,500	20,400	-100	-0.43%	3,000	14.71%
Mining & Logging	700	700	800	0	0.00%	-100	-12.50%
Construction	13,500	13,600	10,600	-100	-0.74%	2,900	27.36%
Heavy & Civil Engineering Construction	5,900	5,600	5,000	300	5.36%	900	18.00%
Manufacturing	9,200	9,200	9,000	0	0.00%	200	2.22%
Nondurable Goods	7,000	7,000	7,000	0	0.00%	0	0.00%
Petroleum & Coal Products Mfg. & Chemical Mfg.	6,600	6,500	6,400	100	1.54%	200	3.13%
Service-Providing	71,800	72,000	71,200	-200	-0.28%	600	0.84%
Private Service-Providing	57,000	57,100	56,100	-100	-0.18%	900	1.60%
Trade, Transportation, & Utilities	17,800	17,700	16,400	100	0.56%	1,400	8.54%
Retail Trade	10,300	10,200	10,300	100	0.98%	0	0.00%
Clothing & Clothing Accessories Stores, General Merchandise	3,200	3,200	3,300	0	0.00%	-100	-3.03%
Professional & Business Services	8,600	8,600	8,400	0	0.00%	200	2.38%
Leisure & Hospitality	12,600	12,600	12,100	0	0.00%	500	4.13%
Accommodation & Food Services	11,100	11,100	10,800	0	0.00%	300	2.78%
Government	14,800	14,900	15,100	-100	-0.67%	-300	-1.99%
Federal Government	500	500	500	0	0.00%	0	0.00%
State Government	2,900	3,000	3,200	-100	-3.33%	-300	-9.38%
Local Government	11,400	11,400	11,400	0	0.00%	0	0.00%

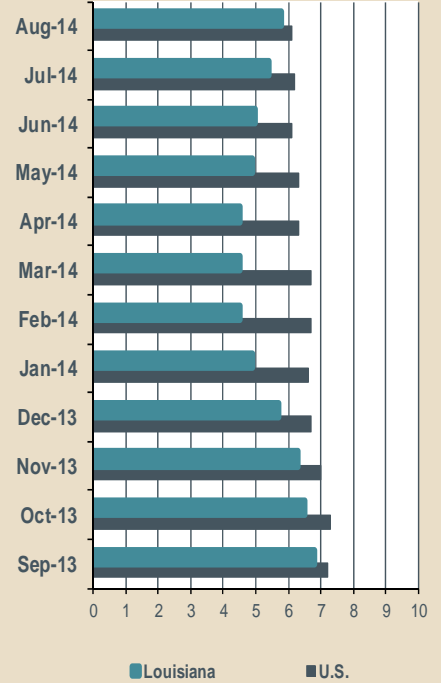
# Louisiana Unemployment Rates (Not Seasonally Adjusted)

August 2014



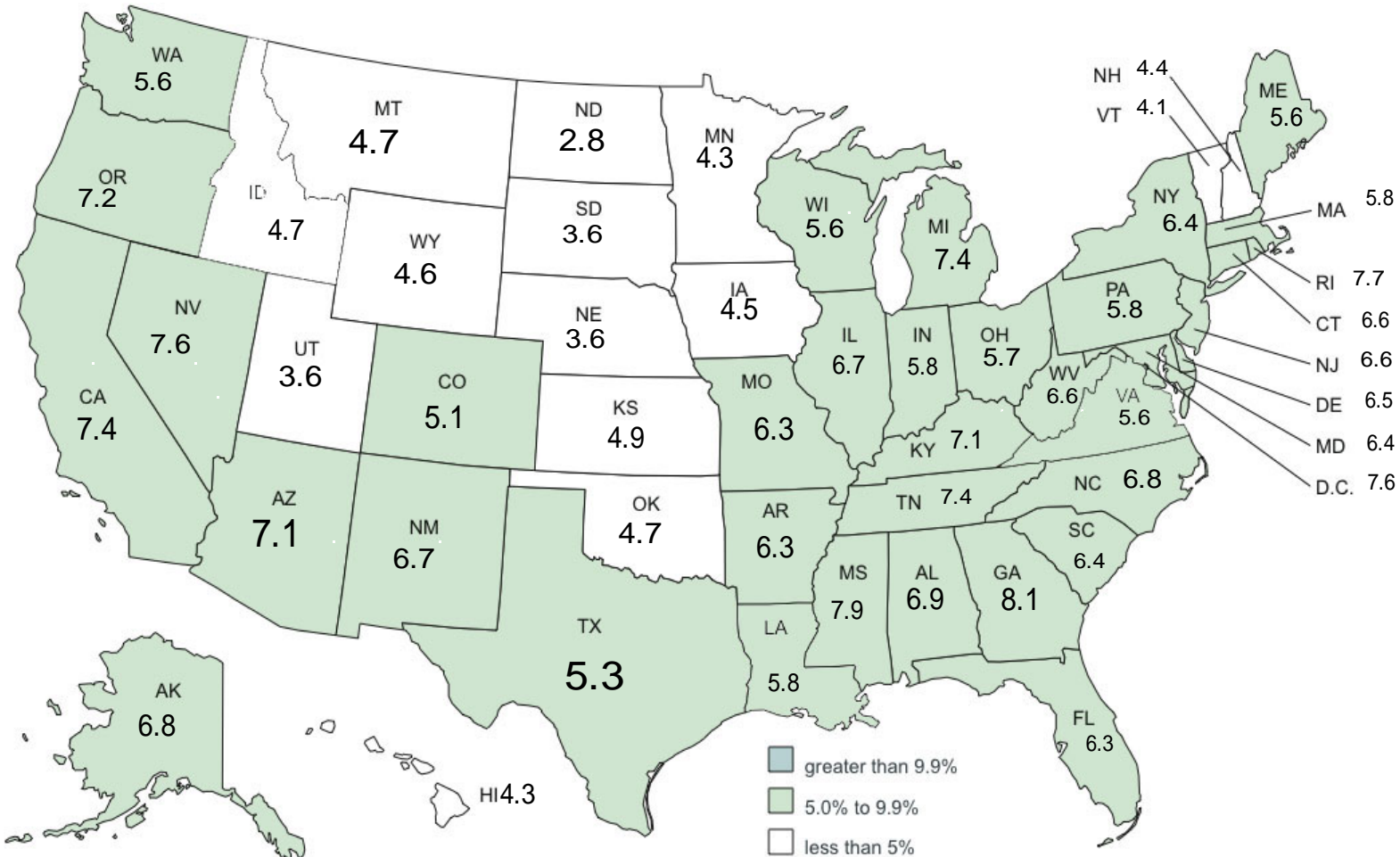
Statewide	6.4%
Alexandria MSA	6.9%
Baton Rouge MSA	6.1%
Houma MSA	4.5%
Lafayette MSA	5.0%
Lake Charles MSA	5.8%
Monroe MSA	6.9%
New Orleans MSA	6.5%
Shreveport/Bossier City MSA	6.9%

United States - Louisiana Unemployment Rates (Seasonally Adjusted)



# United States Unemployment Rates (Seasonally Adjusted)

August 2014



greater than 9.9%  
 5.0% to 9.9%  
 less than 5%

United States Rate 6.1

## CIVILIAN LABOR FORCE (Not Seasonally Adjusted)

Area	Aug 2014			July 2014			Aug 2013		
	Employed	Unemployed	Rate	Employed	Unemployed	Rate	Employed	Unemployed	Rate
<b>UNITED STATES</b>	<b>146,647,000</b>	<b>9,787,000</b>	<b>6.3</b>	<b>147,265,000</b>	<b>10,307,000</b>	<b>6.5</b>	<b>144,509,000</b>	<b>11,462,000</b>	<b>7.3</b>
<b>LOUISIANA</b>	<b>2,023,641</b>	<b>138,716</b>	<b>6.4</b>	<b>2,030,962</b>	<b>133,900</b>	<b>6.2</b>	<b>1,970,944</b>	<b>138,682</b>	<b>6.6</b>
<b>ALEXANDRIA MSA</b>	<b>63,258</b>	<b>4,685</b>	<b>6.9</b>	<b>63,602</b>	<b>4,494</b>	<b>6.6</b>	<b>62,732</b>	<b>4,580</b>	<b>6.8</b>
Grant	8,650	711	7.6	8,697	728	7.7	8,578	629	6.8
Rapides	54,608	3,974	6.8	54,905	3,766	6.4	54,154	3,951	6.8
<b>BATON ROUGE MSA</b>	<b>382,339</b>	<b>24,647</b>	<b>6.1</b>	<b>381,470</b>	<b>23,836</b>	<b>5.9</b>	<b>366,379</b>	<b>24,664</b>	<b>6.3</b>
Ascension	54,092	3,174	5.5	53,969	3,023	5.3	51,834	3,066	5.6
East Baton Rouge	217,906	13,831	6.0	217,411	13,365	5.8	208,810	14,004	6.3
East Feliciana	7,477	597	7.4	7,460	563	7.0	7,165	582	7.5
Iberville	11,983	1,171	8.9	11,956	1,128	8.6	11,483	1,087	8.6
Livingston	61,708	3,605	5.5	61,568	3,508	5.4	59,132	3,572	5.7
Pointe Coupee	9,343	715	7.1	9,322	720	7.2	8,953	726	7.5
St. Helena	4,126	438	9.6	4,117	446	9.8	3,954	521	11.6
West Baton Rouge	11,026	731	6.2	11,000	713	6.1	10,565	710	6.3
West Feliciana	4,677	385	7.6	4,667	370	7.3	4,482	397	8.1
<b>HOUMA-BAYOU CANE-THIBODAUX MSA</b>	<b>107,577</b>	<b>5,072</b>	<b>4.5</b>	<b>108,480</b>	<b>4,860</b>	<b>4.3</b>	<b>104,591</b>	<b>4,925</b>	<b>4.5</b>
Lafourche	51,107	2,365	4.4	51,536	2,296	4.3	49,689	2,274	4.4
Terrebonne	56,470	2,707	4.6	56,944	2,564	4.3	54,902	2,651	4.6
<b>LAFAYETTE MSA</b>	<b>141,123</b>	<b>7,422</b>	<b>5.0</b>	<b>142,156</b>	<b>7,182</b>	<b>4.8</b>	<b>136,864</b>	<b>7,209</b>	<b>5.0</b>
Lafayette	117,956	6,013	4.9	118,819	5,782	4.6	114,396	5,821	4.8
St. Martin	23,167	1,409	5.7	23,337	1,400	5.7	22,468	1,388	5.8
<b>LAKE CHARLES MSA</b>	<b>94,595</b>	<b>5,863</b>	<b>5.8</b>	<b>95,386</b>	<b>5,528</b>	<b>5.5</b>	<b>90,098</b>	<b>5,952</b>	<b>6.2</b>
Calcasieu	91,541	5,687	5.8	92,306	5,350	5.5	87,189	5,788	6.2
Cameron	3,054	176	5.4	3,080	178	5.5	2,909	164	5.3
<b>MONROE MSA</b>	<b>78,167</b>	<b>5,789</b>	<b>6.9</b>	<b>78,938</b>	<b>5,544</b>	<b>6.6</b>	<b>76,448</b>	<b>5,646</b>	<b>6.9</b>
Ouachita	68,888	5,091	6.9	69,567	4,859	6.5	67,373	4,956	6.9
Union	9,279	698	7.0	9,371	685	6.8	9,075	690	7.1
<b>NEW ORLEANS-METairie-Kenner MSA</b>	<b>538,066</b>	<b>37,216</b>	<b>6.5</b>	<b>539,661</b>	<b>35,736</b>	<b>6.2</b>	<b>524,825</b>	<b>37,159</b>	<b>6.6</b>
Jefferson	206,200	13,103	6.0	206,811	12,621	5.8	201,125	12,980	6.1
New Orleans City/Orleans	148,884	12,528	7.8	149,325	12,082	7.5	145,220	12,885	8.1
Plaquemines	9,075	614	6.3	9,102	571	5.9	8,852	555	5.9
St. Bernard	18,496	1,269	6.4	18,551	1,196	6.1	18,041	1,299	6.7
St. Charles	24,137	1,525	5.9	24,209	1,511	5.9	23,543	1,556	6.2
St. John Baptist	18,932	1,606	7.8	18,988	1,522	7.4	18,466	1,652	8.2
St. Tammany	112,342	6,570	5.5	112,675	6,233	5.2	109,578	6,233	5.4
<b>SHREVEPORT-BOSSIER CITY MSA</b>	<b>170,366</b>	<b>12,589</b>	<b>6.9</b>	<b>171,684</b>	<b>12,026</b>	<b>6.5</b>	<b>166,134</b>	<b>12,727</b>	<b>7.1</b>
Bossier	53,325	3,264	5.8	53,738	3,152	5.5	52,001	3,343	6.0
Caddo	106,768	8,386	7.3	107,594	8,026	6.9	104,116	8,463	7.5
De Soto	10,273	939	8.4	10,352	848	7.6	10,018	921	8.4
<b>NON-MSA PARISHES</b>									
Acadia (Crowley) <sup>1</sup>	24,666	1,576	6.0	24,755	1,507	5.7	24,032	1,565	6.1
Allen	7,770	741	8.7	7,754	723	8.5	7,672	739	8.8
Assumption (Pierre Part) <sup>1</sup>	9,857	760	7.2	9,874	716	6.8	9,719	766	7.3
Avoyelles	14,963	1,274	7.8	15,030	1,239	7.6	14,875	1,263	7.8
Beauregard (DeRidder) <sup>1</sup>	13,448	1,005	7.0	13,405	1,019	7.1	13,410	1,046	7.2
Bienville	6,154	457	6.9	6,186	437	6.6	6,106	469	7.1
Caldwell	4,230	318	7.0	4,247	300	6.6	4,108	308	7.0
Catahoula	3,847	323	7.7	3,841	315	7.6	3,711	303	7.5
Claiborne	5,727	550	8.8	5,736	515	8.2	5,916	529	8.2
Concordia (Natchez, MS-LA) <sup>1</sup>	6,689	755	10.1	6,693	728	9.8	6,653	728	9.9
East Carroll	2,420	329	12.0	2,388	334	12.3	2,423	391	13.9
Evangeline	11,893	931	7.3	11,890	919	7.2	11,834	880	6.9
Franklin	6,711	737	9.9	6,742	707	9.5	6,560	764	10.4
Iberia (New Iberia) <sup>1</sup>	33,006	2,033	5.8	33,073	1,975	5.6	32,675	2,059	5.9
Jackson (Ruston) <sup>1</sup>	6,013	449	6.9	6,042	414	6.4	5,775	480	7.7
Jefferson Davis (Jennings) <sup>1</sup>	14,322	828	5.5	14,354	772	5.1	13,898	825	5.6
La Salle	7,225	387	5.1	7,290	373	4.9	7,153	374	5.0
Lincoln (Ruston) <sup>1</sup>	17,996	1,611	8.2	18,084	1,617	8.2	17,283	1,636	8.6
Madison (Tallulah) <sup>1</sup>	4,076	440	9.7	4,098	451	9.9	4,152	430	9.4
Morehouse (Bastrop) <sup>1</sup>	10,174	1,209	10.6	10,263	1,174	10.3	10,158	1,333	11.6
Natchitoches (Natchitoches) <sup>1</sup>	15,546	1,292	7.7	15,738	1,302	7.6	15,110	1,366	8.3
Red River	3,407	297	8.0	3,410	269	7.3	3,282	290	8.1
Richland	8,441	734	8.0	8,412	739	8.1	8,395	777	8.5
Sabine	8,831	632	6.7	8,918	612	6.4	8,758	615	6.6
St. James	9,000	820	8.4	9,015	794	8.1	8,926	867	8.9
St. Landry (Opelousas, Eunice) <sup>1</sup>	36,456	2,575	6.6	36,872	2,456	6.2	35,673	2,469	6.5
St. Mary (Morgan City) <sup>1</sup>	22,073	1,616	6.8	22,125	1,566	6.6	21,829	1,623	6.9
Tangipahoa (Hammond) <sup>1</sup>	49,213	4,005	7.5	49,078	3,988	7.5	48,537	4,140	7.9
Tensas	1,636	170	9.4	1,591	179	10.1	1,610	154	8.7
Vermilion (Abbeville) <sup>1</sup>	23,424	1,453	5.8	23,561	1,415	5.7	22,828	1,373	5.7
Vernon (Fort Polk South) <sup>1</sup>	18,322	1,472	7.4	18,448	1,542	7.7	19,262	1,543	7.4
Washington (Bogalusa) <sup>1</sup>	13,721	1,398	9.2	13,710	1,398	9.3	13,695	1,395	9.2
Webster (Minden) <sup>1</sup>	17,141	1,303	7.1	17,251	1,251	6.8	17,148	1,363	7.4
West Carroll	3,816	497	11.5	3,773	515	12.0	3,711	498	11.8
Winn	5,934	457	7.2	5,938	429	6.7	5,993	457	7.1

In addition to the eight (8) Metropolitan Statistical Areas (MSAs) in Louisiana, there are seventeen (17) Micropolitan Statistical Areas (MCs): Jackson and Lincoln Parishes combine to constitute one MC area. Civilian Labor Force can be derived by adding employed and unemployed. For related information or data, please visit [www.bls.gov/lau/home.htm](http://www.bls.gov/lau/home.htm)



## LOUISIANA - PRIVATE EMPLOYMENT (Not Seasonally Adjusted)

	Avg. Weekly Earnings (\$)			Avg. Weekly Hours			Avg. Hourly Earnings (\$)		
	AUG	JULY	AUG	AUG	JULY	AUG	AUG	JULY	AUG
	2014	2014	2013	2014	2014	2013	2014	2014	2013
Total Private	807.72	802.14	777.59	36.4	36.1	35.9	22.19	22.22	21.66
Goods-Producing	1,156.67	1,138.48	1,103.65	43.5	42.8	43.9	26.59	26.60	25.14
Private Service-Providing	717.60	713.10	692.90	34.6	34.3	33.8	20.74	20.79	20.50
Construction	1,067.16	1,043.89	994.59	43.1	42.8	43.0	24.76	24.39	23.13
Manufacturing	1,128.99	1,128.99	1,147.74	42.7	42.3	44.4	26.44	26.69	25.85
Trade, Transportation, and Utilities	758.10	761.84	730.52	36.1	35.7	36.2	21.00	21.34	20.18
Financial Activities	852.38	826.94	812.92	37.5	37.3	38.6	22.73	22.17	21.06
Professional and Business Services	961.43	947.23	905.04	37.6	36.7	35.9	25.57	25.81	25.21
Education and Health Services	622.93	623.95	633.12	33.8	33.8	33.2	18.43	18.46	19.07
Leisure and Hospitality	343.63	345.35	331.14	27.1	27.3	26.9	12.68	12.65	12.31

## METROPOLITAN STATISTICAL AREAS (MSAs) - PRIVATE EMPLOYMENT (Not Seasonally Adjusted)

	Avg. Weekly Earnings (\$)			Avg. Weekly Hours			Avg. Hourly Earnings (\$)		
	AUG	JULY	AUG	AUG	JULY	AUG	AUG	JULY	AUG
	2014	2014	2013	2014	2014	2013	2014	2014	2013
Alexandria	578.80	584.06	649.50	35.1	35.1	38.5	16.49	16.64	16.87
Baton Rouge	835.39	834.25	786.59	35.9	35.5	35.4	23.27	23.50	22.22
Houma	1,020.78	1,043.10	1,021.68	42.8	43.3	44.0	23.85	24.09	23.22
Lafayette	928.17	900.25	829.93	37.7	36.7	37.3	24.62	24.53	22.25
Lake Charles	852.22	825.86	832.13	39.4	38.7	38.4	21.63	21.34	21.67
Monroe	644.05	643.72	683.93	35.9	36.7	35.4	17.94	17.54	19.32
New Orleans	866.91	865.92	842.75	35.5	35.2	35.1	24.42	24.60	24.01
Shreveport	653.21	649.52	593.30	35.1	35.3	34.0	18.61	18.40	17.45

## AVERAGE HOURS AND EARNINGS FOR PRODUCTION WORKERS IN MANUFACTURING AND SELECTED NONMANUFACTURING INDUSTRIES (Not Seasonally Adjusted)

	Avg. Weekly Earnings (\$)			Avg. Weekly Hours			Avg. Hourly Earnings (\$)		
	AUG	JULY	AUG	AUG	JULY	AUG	AUG	JULY	AUG
	2014	2014	2013	2014	2014	2013	2014	2014	2013
Louisiana									
Mining & Logging	1,285.65	1,236.27	1,204.69	46.7	44.2	47.9	27.53	27.97	25.15
Manufacturing	980.31	974.25	982.80	43.3	43.3	45.0	22.64	22.50	21.84
Durable Goods	957.68	905.32	1,009.62	43.1	43.4	48.1	22.22	20.86	20.99
Nondurable Goods	1,005.85	1,050.89	956.16	43.6	43.3	41.9	23.07	24.27	22.82

The 108,500 production workers in all manufacturing earned an average of \$980.31 per week in August 2014. Average weekly hours were 43.3, and average hourly earnings were \$22.64.

**LOUISIANA UNEMPLOYMENT INSURANCE by CLAIMANT'S PARISH of RESIDENCE**

**WEEK ENDING - August 16, 2014**

RLMA/PARISH	INITIAL CLAIMS	WEEKS CLAIMED	RLMA/PARISH	INITIAL CLAIMS	WEEKS CLAIMED	RLMA/PARISH	INITIAL CLAIMS	WEEKS CLAIMED
<b>RLMA 1</b>	<b>621</b>	<b>5,972</b>	<b>RLMA 4</b>	<b>227</b>	<b>2,195</b>	<b>RLMA 7</b>	<b>263</b>	<b>2,850</b>
JEFFERSON	208	2,044	ACADIA	15	153	BIENVILLE	10	58
ORLEANS	240	2,357	EVANGELINE	6	136	BOSSIER	38	372
PLAQUEMINES	8	66	IBERIA	27	272	CADDO	130	1,464
ST. BERNARD	3	41	LAFAYETTE	85	683	CLAIBORNE	7	69
ST. CHARLES	26	209	ST. LANDRY	37	421	DESOTO	14	135
ST. JAMES	22	191	ST. MARTIN	19	151	LINCOLN	22	265
ST. JOHN	34	328	ST. MARY	23	244	NATCHITOCHEs	11	201
ST. TAMMANY	80	736	VERMILION	15	135	RED RIVER	4	46
						SABINE	6	53
						WEBSTER	21	187
<b>RLMA 2</b>	<b>450</b>	<b>4,557</b>	<b>RLMA 5</b>	<b>119</b>	<b>1,035</b>	<b>RLMA 8</b>	<b>160</b>	<b>1,608</b>
ASCENSION	42	436	ALLEN	7	67	CALDWELL	3	35
E. BATON ROUGE	231	2,204	BEAUREGARD	19	85	EAST CARROLL	3	46
EAST FELICIANA	9	91	CALCASIEU	86	791	FRANKLIN	9	87
IBERVILLE	21	240	CAMERON	0	10	JACKSON	5	59
LIVINGSTON	44	411	JEFF. DAVIS	7	82	MADISON	8	57
POINTE COUPEE	12	118				MOREHOUSE	24	218
ST. HELENA	2	38	<b>RLMA 6</b>	<b>162</b>	<b>1,250</b>	OUACHITA	74	839
TANGIPAHOA	62	678	AVOYELLES	30	177	RICHLAND	19	101
WASHINGTON	15	189	CATAHOULA	7	49	TENSAS	0	27
W. BATON ROUGE	9	125	CONCORDIA	17	115	UNION	9	92
WEST FELICIANA	3	27	GRANT	9	76	WEST CARROLL	6	47
			LASALLE	2	33			
<b>RLMA 3</b>	<b>64</b>	<b>523</b>	RAPIDES	66	600			
ASSUMPTION	13	109	VERNON	24	139			
LAFOURCHE	17	198	WINN	7	61			
TERREBONNE	34	216						

RLMA = REGIONAL LABOR MARKET AREA

THE ABOVE FIGURES INCLUDE REGULAR UNEMPLOYMENT INSURANCE (UI), UNEMPLOYMENT CLAIMS for FEDERAL EMPLOYEES (UCFE), and UNEMPLOYMENT CLAIMS for EX-SERVICE MEMBERS (UCX) DATA ONLY.

**Labor Market Questions and Answers!**

- **When will the Louisiana Labor Force Diversity Data book for 2014 be available?**

The Louisiana Labor Force Diversity Data book for 2014 is available online for downloading.

This product provides population and labor force data by sex, race, and ethnic group for the state, metropolitan statistical areas and individual parishes. The labor force also includes data by occupation, sex, and race. Unemployment Insurance (UI) Claimant Characteristics are included with details by sex, race, age, ethnicity, industry, and occupation for claimants filing UI claims for continued weeks of unemployment benefits during the week of the 19<sup>th</sup> of the month.

Web navigation: Louisiana's employment homepage <http://www.laworks.net> > Labor Market Information > Louisiana Labor Force Diversity Data.

[http://www.laworks.net/Downloads/Employment/AffirmativeActionPublication\\_2014.pdf](http://www.laworks.net/Downloads/Employment/AffirmativeActionPublication_2014.pdf)

# Glossary & Technical Notes

**Average Hourly Earnings/Average Weekly Earnings/ Average Weekly Hours (CES/BLS)** - average total money earnings, in the survey week (i.e., the week that includes the twelfth of the month), of production workers plus nonsupervisory workers not in production, including overtime, paid vacation and sick leave.

**Civilian Labor Force** - that portion of the population, age sixteen or older, which is employed or unemployed and actively seeking employment during the reference week of the twelfth of the month.

**Employed** - the members of the labor force who worked for pay or profit, or had a job from which they were temporarily absent because of illness, vacation, labor dispute, or other reasons not reflecting a shortage of work, or who worked fifteen hours or more as unpaid workers in an enterprise operated by a member of the family.

**Unemployed** - the members of the labor force who did not work but were seeking work or were awaiting recall from layoffs or the beginning of a new job within thirty days.

**Unemployment Rate** - the number of unemployed persons expressed as a percentage of the labor force.

**Continued Claim** - each week claimed subsequent to the filing of the initial claim for a week of unemployment compensation.

**Current Employment Statistics (CES)** - estimates of nonfarm employment and production workers hours and earnings by industry. They are produced as part of a nationwide program, in cooperation with the Bureau of Labor Statistics (BLS), for the state and each metropolitan statistical area (MSA) from a sample of employing establishments.

**Current Population Survey (CPS)** - a monthly household survey of the U.S. population conducted for the Bureau of Labor Statistics (BLS) by the Bureau of Census, of 56,000 selected households. Respondents are interviewed to obtain information on the employment status of each household member age 16 and over, during the reference week of the twelfth.

**Durable Goods** - items with a normal life expectancy of three years or more. Automobiles, furniture, household appliances, and mobile homes are examples.

**Extended Layoff Event** - Fifty or more initial claims for unemployment insurance benefits from an establishment during a 5-week period, with at least 50 workers separated for more than 30 days.

**Initial Claims** - a new claim, filed to open a claim for unemployment compensation.

**Metropolitan Statistical Area (MSA)** - a geographical area comprised of a parish generally containing a central city (or twin cities) of 50,000 inhabitants or more and contiguous parishes that are socially and economically integrated with the central city.

**Micropolitan Statistical Area (MC)** - a geographical area comprised of a parish containing a central city of at least 10,000 but less than 50,000 inhabitants and contiguous parishes that are socially and economically integrated with the central city.

**NAICS (North American Industry Classification System)** - an industry classification system that groups establishments into industries based on the activities in which they are primarily engaged.

**Nonfarm Employment** - employment by place of work that does not include the self employed, unpaid family workers, domestics, or agriculture workers. All estimates of nonfarm employment in this publication are in cooperation with the U.S. Department of Labor Bureau of Labor Statistics and include all full-time and part-time workers who were employed during the pay period including the twelfth of the month.

**Nondurable Goods** - items that generally last for only a short period of time (less than three years). Food, beverages, apparel, and gasoline are common examples.

**Seasonally Adjusted** - monthly data that is adjusted to minimize the changes in any time series which result from normal annual occurrences such as Christmas, summer vacations, and weather patterns.

**Separation** - The release of persons from an employer as part of a mass layoff event. Such releases involve both persons subject to recall and those who are terminated by the establishment.

**Subsector** - refers to the three-digit NAICS code, which will fall under the particular sector. Example: If Manufacturing (31-33) is the industry sector, then Food manufacturing (311), Paper manufacturing (322), Chemical manufacturing (325), Transportation equipment manufacturing (336), are some of the subsectors of manufacturing.

**Supersector** - refers to these five categories: Total Nonfarm, Total Private, Goods-Producing, Service-Providing, and Private Service-Providing.

**Summary Industry Sector** - a combination of industry sectors. A summary sector may or may not be published. The summary industry sectors are Mining & Logging; Construction; Manufacturing; Trade, Transportation, & Utilities; Information; Financial Activities; Professional & Business Services; Education & Health Services; Leisure & Hospitality; Other Services; and Government.

**Industry Sector** - 20 industry sectors based on two-digit NAICS code. They are Agriculture, Forestry, Fishing and Hunting (11), Mining (21), Utilities (22), Construction (23), Manufacturing (31-33), Wholesale Trade (42), Retail Trade (44-45), Transportation and Warehousing (48-49), Information (51), Finance and Insurance (52), Real Estate and Rental and Leasing (53), Professional and Technical Services (54), Management of Companies and Enterprises (55), Administrative and Waste Services (56), Educational Services (61), Health Care and Social Assistance (62), Arts, Entertainment, and Recreation (71), Accommodation and Food Services (72), Other Services (81), and Public Administration (92).

## Constraints of the monthly civilian labor force and nonfarm employment estimates:

The civilian labor force estimates are derived by a monthly survey of approximately 750 households throughout Louisiana following the Bureau of Labor Statistics (BLS) methodology. The US Census Bureau conducts the survey by calling randomly selected households and providing BLS with survey results. Households are asked for the number of residents who are sixteen and over and whether they were working or actively looking for work during the week of the twelfth of the month. Responses to these questions become part of the formula to determine the number of people employed and the number of individuals unemployed for the state, MSAs, and each parish every month.

The nonfarm employment estimates are derived from responses received from the monthly BLS survey of approximately 5,000 businesses across the state. Responses capture employment activity during the 12th of each month. This survey relies on responses from these businesses to produce industry employment levels for the state and all metropolitan statistical areas.

Both data sets are comparable with estimates for the U.S., all 50 states, and 270 metropolitan areas across the U.S.

## LABOR MARKET INFORMATION WEB LINKS

### **Civilian Labor Force - LAUS (Local Area Unemployment Statistics) –**

#### **Employment, Unemployment and Unemployment Insurance Rate**

LA <https://www.louisianaworks.net/hire/altentry.asp?action=lmiguest>

Left menu: Historical Data Analysis – Employment and Wage Data – Labor Force Data – Labor Force Employment and Unemployment (LAUS)

States <http://data.bls.gov/cgi-bin/dsrv?la>

US <http://data.bls.gov/pdq/querytool.jsp?survey=ln>

#### **Consumer Price Index (US) <http://data.bls.gov/cgi-bin/surveymost?cu>**

#### **Download Louisiana Workforce Commission’s Labor Market Information Products**

LA [http://www.laworks.net/Downloads/Downloads\\_LMI.asp](http://www.laworks.net/Downloads/Downloads_LMI.asp)

#### **Employment and Wage Data – Quarterly Census of Employment and Wages (QCEW)**

LA <https://www.louisianaworks.net/hire/altentry.asp?action=lmiguest>

Left menu: Historical Data Analysis – Employment and Wage Data – Industry Data – Quarterly Census of Employment and Wages (QCEW)

States & US <http://data.bls.gov/cgi-bin/dsrv?en>

#### **Mass Layoff Statistics (MLS) <http://stats.bls.gov/mls/>**

#### **NAICS (North American Industry Classification System) Codes Look-Up Table**

<http://www.census.gov/eos/www/naics>

#### **Nonfarm Employment, Hours and Earnings - CES (Current Employment Statistics)**

LA <https://www.louisianaworks.net/hire/altentry.asp?action=lmiguest>

Left menu: Historical Data Analysis – Employment and Wage Data – Industry Data – Current Employment Statistics (CES) – select Show Earnings Data under table

States <http://data.bls.gov/cgi-bin/dsrv?sm>

US <http://data.bls.gov/cgi-bin/dsrv?ce>

#### **Unemployment Insurance Claimants Data (by Occupation) - Unemployment Insurance (UI)**

LA <https://www.louisianaworks.net/hire/altentry.asp?action=lmiguest>

Left menu: Historical Data Analysis – Employment and Wage Data – Labor Force Data – Unemployment Insurance Claimants

#### **Unemployment Insurance Claims Data (by Region, Parish, Industry) - UI**

LA [http://www.laworks.net/LaborMarketInfo/LMI\\_UIClaimsReportMenu.asp](http://www.laworks.net/LaborMarketInfo/LMI_UIClaimsReportMenu.asp)

States & US <http://ows.doleta.gov/unemploy/claims.asp>

#### **Unemployment Rates for all States - LAUS**

States <http://www.bls.gov/web/laumstrk.htm>



Office of Occupational Information Services  
Research & Statistics Division  
Post Office Box 94094  
Baton Rouge, LA 70804-9094

Data for: 08/2014



*Workforce At A Glance* is published monthly by the Louisiana Workforce Commission. The material in this publication is not copyrighted and may be reproduced; however, the LWC would appreciate credit for the material used and a copy of the reprint.

**LMI Staff:**

Sachin Chintawar, LMI Manager  
Ramona Robichaux, Supervisor  
Karen Clark, Jonathan Helis,  
Knox Hutchinson, and Ryan Reynolds

**Contributors:**

Natalie Foster-Lawrence, Mark  
Jones, Tara Robinson, and  
Karen Clark

**Contact Us:**

Phone (225) 342-3141; Fax (225) 219-7759

**Bobby Jindal, Governor**  
State of Louisiana

**Curt Eysink, Executive Director**  
Louisiana Workforce Commission

**Raj Jindal,**  
Information Technology Director

Visit our website:  
[www.laworks.net](http://www.laworks.net)